

**Product Name: Cdc25C (11W11) Rabbit Monoclonal Antibody**  
**Catalog #: AMRe08507**

---



## Summary

<b>Production Name</b>	Cdc25C (11W11) Rabbit Monoclonal Antibody
<b>Description</b>	Rabbit Monoclonal Antibody
<b>Host</b>	Rabbit
<b>Application</b>	WB,ELISA
<b>Reactivity</b>	Human

## Performance

<b>Conjugation</b>	Unconjugated
<b>Modification</b>	Unmodified
<b>Isotype</b>	IgG
<b>Clonality</b>	Monoclonal
<b>Form</b>	Liquid
<b>Storage</b>	Store at 4°C short term. Aliquot and store at -20°C long term. Avoid freeze/thaw cycles.
<b>Buffer</b>	Rabbit IgG in phosphate buffered saline , pH 7.4, 150mM NaCl, 0.02% New type preservative N and 50% glycerol. Store at +4°C short term. Store at -20°C long term. Avoid freeze / thaw cycle.
<b>Purification</b>	Affinity purification

## Immunogen

<b>Gene Name</b>	CDC25C
<b>Alternative Names</b>	CDC25; CDC25C; Cell division cycle 25 homolog C; MPIP3; PPP1R60;
<b>Gene ID</b>	995.0
<b>SwissProt ID</b>	P30307.

## Application

<b>Dilution Ratio</b>	WB 1:500-1:2000
<b>Molecular Weight</b>	53kDa

**Product Name: Cdc25C (11W11) Rabbit Monoclonal Antibody**  
**Catalog #: AMRe08507**



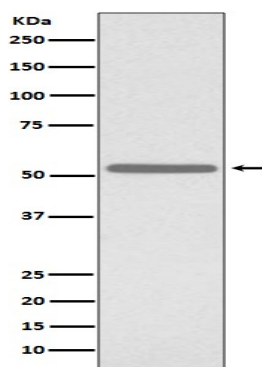
---

## Background

Functions as a dosage-dependent inducer in mitotic control. It is a tyrosine protein phosphatase required for progression of the cell cycle. It directly dephosphorylates CDK1 and activate its kinase activity. Functions as a dosage-dependent inducer in mitotic control. Tyrosine protein phosphatase required for progression of the cell cycle. When phosphorylated, highly effective in activating G2 cells into prophase. Directly dephosphorylates CDK1 and activates its kinase activity.

## Research Area

## Image Data



Western blot analysis of Cdc25C expression in K562 cell lysate.

## Note

For research use only.