

**Product Name: Catenin gamma (14M19) Rabbit
Monoclonal Antibody
Catalog #: AMRe08001**

Summary

Production Name	Catenin gamma (14M19) Rabbit Monoclonal Antibody
Description	Rabbit Monoclonal Antibody
Host	Rabbit
Application	WB
Reactivity	Human

Performance

Conjugation	Unconjugated
Modification	Unmodified
Isotype	IgG
Clonality	Monoclonal
Form	Liquid
Storage	Store at 4°C short term. Aliquot and store at -20°C long term. Avoid freeze/thaw cycles.
Buffer	Supplied in 50mM Tris-Glycine(pH 7.4), 0.15M NaCl, 40%Glycerol, 0.01% New type preservative N and 0.05% BSA.
Purification	Affinity purification

Immunogen

Gene Name	JUP
Alternative Names	ARVD12; Catenin gamma; CTNNG; Desmoplakin III; Desmoplakin-3; DP3; DP11; gamma-catenin; Junction plakoglobin; JUP; PDGB; PKGB; PLAK;
Gene ID	3728.0
SwissProt ID	P14923.Recombinant protein of human gamma Catenin

Application

Dilution Ratio	WB: 1:2000
Molecular Weight	82kDa

**Product Name: Catenin gamma (14M19) Rabbit
Monoclonal Antibody
Catalog #: AMRe08001**

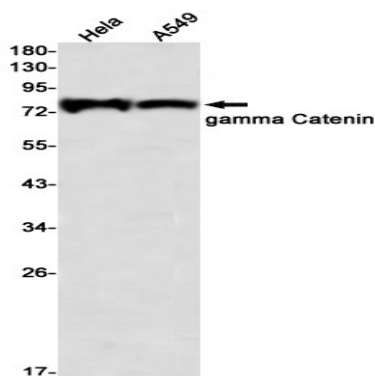


Background

Desmoplakin 3 Common junctional plaque protein. The membrane-associated plaques are architectural elements in an important strategic position to influence the arrangement and function of both the cytoskeleton and the cells within the tissue. The presence of plakoglobin in both the desmosomes and in the intermediate junctions suggests that it plays a central role in the structure and function of submembranous plaques. Common junctional plaque protein. The membrane-associated plaques are architectural elements in an important strategic position to influence the arrangement and function of both the cytoskeleton and the cells within the tissue. The presence of plakoglobin in both the desmosomes and in the intermediate junctions suggests that it plays a central role in the structure and function of submembranous plaques. Acts as a substrate for VE-PTP and is required by it to stimulate VE-cadherin function in endothelial cells. Can replace beta-catenin in E-cadherin/catenin adhesion complexes which are proposed to couple cadherins to the actin cytoskeleton (By similarity).

Research Area

Image Data



Western blot detection of gamma Catenin in HeLa,A549 using gamma Catenin antibody(1:1000 diluted)

Note

For research use only.