

**Product Name: C4 binding protein (14B18) Rabbit
Monoclonal Antibody
Catalog #: AMRe07750**



Summary

Production Name	C4 binding protein (14B18) Rabbit Monoclonal Antibody
Description	Rabbit Monoclonal Antibody
Host	Rabbit
Application	WB,ELISA
Reactivity	Human,Rat

Performance

Conjugation	Unconjugated
Modification	Unmodified
Isotype	IgG
Clonality	Monoclonal
Form	Liquid
Storage	Store at 4°C short term. Aliquot and store at -20°C long term. Avoid freeze/thaw cycles.
Buffer	Rabbit IgG in phosphate buffered saline , pH 7.4, 150mM NaCl, 0.02% New type preservative N and 50% glycerol. Store at +4°C short term. Store at -20°C long term. Avoid freeze / thaw cycle.
Purification	Affinity purification

Immunogen

Gene Name	C4BPB
Alternative Names	C4BP; C4BPB; PRP;
Gene ID	725.0
SwissProt ID	P20851.

Application

Dilution Ratio	WB 1:500-1:1000
Molecular Weight	28kDa

**Product Name: C4 binding protein (14B18) Rabbit
Monoclonal Antibody
Catalog #: AMRe07750**

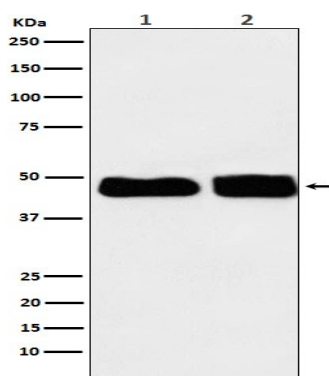


Background

Controls the classical pathway of complement activation. It binds as a cofactor to C3b/C4b inactivator (C3bINA), which then hydrolyzes the complement fragment C4b. Controls the classical pathway of complement activation. It binds as a cofactor to C3b/C4b inactivator (C3bINA), which then hydrolyzes the complement fragment C4b. It also accelerates the degradation of the C4bC2a complex (C3 convertase) by dissociating the complement fragment C2a. It also interacts with anticoagulant protein S and with serum amyloid P component. The beta chain binds protein S.

Research Area

Image Data



Western blot analysis of C4 binding protein expression in (1) Human plasma lysate; (2) Rat plasma lysate.

Note

For research use only.