

**Product Name: beta 2 Microglobulin (18W13) Rabbit  
Monoclonal Antibody  
Catalog #: AMRe07538**

---



## Summary

<b>Production Name</b>	beta 2 Microglobulin (18W13) Rabbit Monoclonal Antibody
<b>Description</b>	Rabbit Monoclonal Antibody
<b>Host</b>	Rabbit
<b>Application</b>	WB
<b>Reactivity</b>	Human,Mouse,Rat

## Performance

<b>Conjugation</b>	Unconjugated
<b>Modification</b>	Unmodified
<b>Isotype</b>	IgG
<b>Clonality</b>	Monoclonal
<b>Form</b>	Liquid
<b>Storage</b>	Store at 4°C short term. Aliquot and store at -20°C long term. Avoid freeze/thaw cycles.
<b>Buffer</b>	Supplied in 50mM Tris-Glycine(pH 7.4), 0.15M NaCl, 40%Glycerol, 0.01% New type preservative N and 0.05% BSA.
<b>Purification</b>	Affinity purification

## Immunogen

<b>Gene Name</b>	B2M
<b>Alternative Names</b>	B2MG; Beta 2 microglobin; Beta 2 microglobulin; Beta-2-microglobulin form pI 5.3; CDABP0092; Hdcma22p;
<b>Gene ID</b>	567.0
<b>SwissProt ID</b>	P61769.A synthetic peptide of human beta 2 Microglobulin

## Application

<b>Dilution Ratio</b>	WB: 1:1000
<b>Molecular Weight</b>	14kDa

**Product Name: beta 2 Microglobulin (18W13) Rabbit  
Monoclonal Antibody  
Catalog #: AMRe07538**

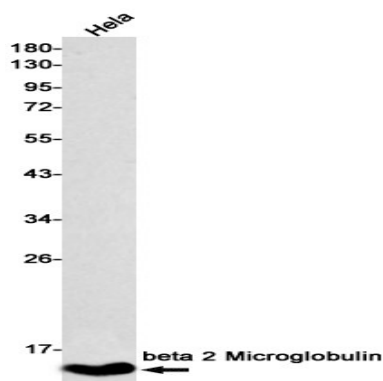


## Background

Major histocompatibility complex (MHC) class 1 molecules bind to antigens for presentation on the surface of cells. The proteasome is responsible for producing these antigens from the components of foreign pathogens. MHC class 1 molecules consist of an a heavy chain that contains three subdomains ( $\alpha 1$ ,  $\alpha 2$ ,  $\alpha 3$ ), and a non-covalent associating light chain, known as  $\beta$ -2-Microglobulin. Component of the class I major histocompatibility complex (MHC). Involved in the presentation of peptide antigens to the immune system. Exogenously applied M.tuberculosis EsxA or EsxA-EsxB (or EsxA expressed in host) binds B2M and decreases its export to the cell surface (total protein levels do not change), probably leading to defects in class I antigen presentation (PubMed: <http://www.uniprot.org/citations/25356553> target="\_blank">25356553</a>).

## Research Area

## Image Data



Western blot detection of beta 2 Microglobulin in HeLa cell lysates using beta 2 Microglobulin antibody(1:500 diluted).

## Note

For research use only.