

**Product Name: Bcl-XL (4B16) Rabbit Monoclonal Antibody**  
**Catalog #: AMRe07516**

---

## Summary

<b>Production Name</b>	Bcl-XL (4B16) Rabbit Monoclonal Antibody
<b>Description</b>	Rabbit Monoclonal Antibody
<b>Host</b>	Rabbit
<b>Application</b>	WB,ELISA
<b>Reactivity</b>	Human,Mouse,Rat

## Performance

<b>Conjugation</b>	Unconjugated
<b>Modification</b>	Unmodified
<b>Isotype</b>	IgG
<b>Clonality</b>	Monoclonal
<b>Form</b>	Liquid
<b>Storage</b>	Store at 4°C short term. Aliquot and store at -20°C long term. Avoid freeze/thaw cycles.
<b>Buffer</b>	Rabbit IgG in phosphate buffered saline , pH 7.4, 150mM NaCl, 0.02% New type preservative N and 50% glycerol. Store at +4°C short term. Store at -20°C long term. Avoid freeze / thaw cycle.
<b>Purification</b>	Affinity purification

## Immunogen

<b>Gene Name</b>	BCL2L1
<b>Alternative Names</b>	Apoptosis regulator Bcl-X; BLC2L; Bcl-2-like 1 protein bclxl; BCL2L; BCL2L1; BCLX;
<b>Gene ID</b>	598.0
<b>SwissProt ID</b>	Q07817.

## Application

<b>Dilution Ratio</b>	WB 1:500-1:2000
<b>Molecular Weight</b>	26kDa

**Product Name: Bcl-XL (4B16) Rabbit Monoclonal Antibody**  
**Catalog #: AMRe07516**

---

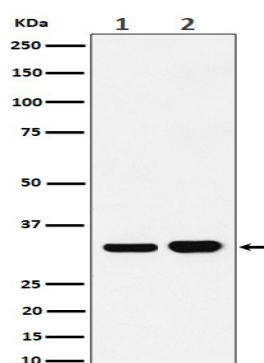


## Background

The protein encoded by this gene belongs to the BCL-2 protein family. BCL-2 family members form hetero- or homodimers and act as anti- or pro-apoptotic regulators that are involved in a wide variety of cellular activities. Potent inhibitor of cell death. Inhibits activation of caspases. Appears to regulate cell death by blocking the voltage- dependent anion channel (VDAC) by binding to it and preventing the release of the caspase activator, CYC1, from the mitochondrial membrane. Also acts as a regulator of G2 checkpoint and progression to cytokinesis during mitosis. Isoform Bcl-X(S) promotes apoptosis.

## Research Area

## Image Data



Western blot analysis of Bcl-XL expression in (1) Ramos cell lysate; (2) K562 cell lysate.

## Note

For research use only.