

**Product Name: BCHE (12S11) Rabbit Monoclonal Antibody**  
**Catalog #: AMRe07492**

---

## Summary

<b>Production Name</b>	BCHE (12S11) Rabbit Monoclonal Antibody
<b>Description</b>	Rabbit Monoclonal Antibody
<b>Host</b>	Rabbit
<b>Application</b>	WB,ELISA
<b>Reactivity</b>	Human

## Performance

<b>Conjugation</b>	Unconjugated
<b>Modification</b>	Unmodified
<b>Isotype</b>	IgG
<b>Clonality</b>	Monoclonal
<b>Form</b>	Liquid
<b>Storage</b>	Store at 4°C short term. Aliquot and store at -20°C long term. Avoid freeze/thaw cycles.
<b>Buffer</b>	Rabbit IgG in phosphate buffered saline , pH 7.4, 150mM NaCl, 0.02% New type preservative N and 50% glycerol. Store at +4°C short term. Store at -20°C long term. Avoid freeze / thaw cycle.
<b>Purification</b>	Affinity purification

## Immunogen

<b>Gene Name</b>	BCHE
<b>Alternative Names</b>	BCHE; Butyrylcholine esterase; CHE1; CHE2; Choline esterase II; Cholinesterase (serum) 2; Cholinesterase 1; Cholinesterase; E1;
<b>Gene ID</b>	590.0
<b>SwissProt ID</b>	P06276.

## Application

<b>Dilution Ratio</b>	WB 1:500-1:2000
<b>Molecular Weight</b>	68kDa

**Product Name: BCHE (12S11) Rabbit Monoclonal Antibody**  
**Catalog #: AMRe07492**

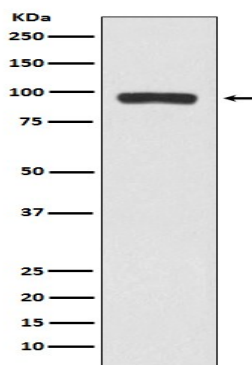
---

## Background

Esterase with broad substrate specificity. Contributes to the inactivation of the neurotransmitter acetylcholine. Can degrade neurotoxic organophosphate esters. Esterase with broad substrate specificity. Contributes to the inactivation of the neurotransmitter acetylcholine. Can degrade neurotoxic organophosphate esters.

## Research Area

## Image Data



Western blot analysis of BCHE expression in A375 cell lysate.

## Note

For research use only.