

Product Name: Apg12 (18O8) Rabbit Monoclonal Antibody
Catalog #: AMRe07005

Summary

| | |
|------------------------|---|
| Production Name | Apg12 (18O8) Rabbit Monoclonal Antibody |
| Description | Rabbit Monoclonal Antibody |
| Host | Rabbit |
| Application | WB |
| Reactivity | Human |

Performance

| | |
|---------------------|--|
| Conjugation | Unconjugated |
| Modification | Unmodified |
| Isotype | IgG |
| Clonality | Monoclonal |
| Form | Liquid |
| Storage | Store at 4°C short term. Aliquot and store at -20°C long term. Avoid freeze/thaw cycles. |
| Buffer | Supplied in 50mM Tris-Glycine(pH 7.4), 0.15M NaCl, 40%Glycerol, 0.01% New type preservative N and 0.05% BSA. |
| Purification | Affinity purification |

Immunogen

| | |
|--------------------------|---|
| Gene Name | ATG12 |
| Alternative Names | APG12-like; APG12L; ATG12; Autophagy 12; FBR93; HAPG12; |
| Gene ID | 9140.0 |
| SwissProt ID | O94817.A synthetic peptide of human Apg12 |

Application

| | |
|-------------------------|-------------------|
| Dilution Ratio | WB: 1:1000-1:5000 |
| Molecular Weight | 15kDa |

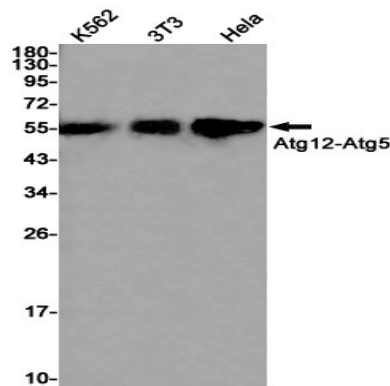
Background

Product Name: Apg12 (18O8) Rabbit Monoclonal Antibody
Catalog #: AMRe07005

Ubiquitin-like protein required for autophagy. Conjugated to ATG3 and ATG5. Ubiquitin-like protein involved in autophagy vesicles formation. Conjugation with ATG5 through a ubiquitin-like conjugating system involving also ATG7 as an E1-like activating enzyme and ATG10 as an E2-like conjugating enzyme, is essential for its function. The ATG12-ATG5 conjugate acts as an E3-like enzyme which is required for lipidation of ATG8 family proteins and their association to the vesicle membranes.

Research Area

Image Data



Western blot detection of Apg12 in K562,3T3,HeLa cell lysates using Apg12 antibody(1:1000 diluted).

Note

For research use only.