

Product Name: 41701(11H8) Rabbit Monoclonal Antibody
Catalog #: AMRe06324

Summary

Production Name	41701(11H8) Rabbit Monoclonal Antibody
Description	Rabbit Monoclonal Antibody
Host	Rabbit
Application	WB
Reactivity	Human,Mouse,Rat

Performance

Conjugation	Unconjugated
Modification	Unmodified
Isotype	IgG
Clonality	Monoclonal
Form	Liquid
Storage	Store at 4°C short term. Aliquot and store at -20°C long term. Avoid freeze/thaw cycles.
Buffer	Supplied in 50mM Tris-Glycine(pH 7.4), 0.15M NaCl, 40%Glycerol, 0.01% New type preservative N and 0.05% BSA.
Purification	Affinity purification

Immunogen

Gene Name	
Alternative Names	14 3 3 protein beta/alpha; 14 3 3 protein zeta; 14 3 3 zeta; 14-3-3 protein/cytosolic phospholipase A2; GW128; HS1; KCIP 1; YWHAB; YWHAD; YWHAZ;
Gene ID	
SwissProt ID	P31946/P63104.A synthetic peptide of human '14-3-3

Application

Dilution Ratio	WB: 1:2000
Molecular Weight	28kDa

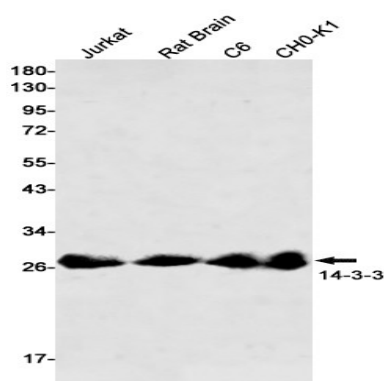
Product Name: 41701(11H8) Rabbit Monoclonal Antibody
Catalog #: AMRe06324

Background

Adapter protein implicated in the regulation of a large spectrum of both general and specialized signaling pathways. Binds to a large number of partners, usually by recognition of a phosphoserine or phosphothreonine motif. Binding generally results in the modulation of the activity of the binding partner.

Research Area

Image Data



Western blot detection of 41701 in Jurkat,Rat Brain,C6,CHO-K1 cell lysates using 14-3-3 antibody(1:500 diluted).

Note

For research use only.