

**Product Name: Phospho-Smad2 (S255) (16D10) Rabbit
Monoclonal Antibody
Catalog #: AMRe06009**



Summary

Production Name	Phospho-Smad2 (S255) (16D10) Rabbit Monoclonal Antibody
Description	Rabbit Monoclonal Antibody
Host	Rabbit
Application	WB
Reactivity	Human,Mouse,Rat

Performance

Conjugation	Unconjugated
Modification	Phospho Antibody
Isotype	IgG
Clonality	Monoclonal
Form	Liquid
Storage	Store at 4°C short term. Aliquot and store at -20°C long term. Avoid freeze/thaw cycles.
Buffer	Supplied in 50mM Tris-Glycine(pH 7.4), 0.15M NaCl, 40%Glycerol, 0.01% New type preservative N and 0.05% BSA.
Purification	Affinity purification

Immunogen

Gene Name	SMAD2
Alternative Names	JV18-1, MADH2, MADR2, Mad-related protein 2, Mothers against DPP homolog 2, Mothers against decapentaplegic homolog 2, Smad 2;
Gene ID	4087.0
SwissProt ID	Q15796.A synthetic phosphopeptide corresponding to residues surrounding Ser250 of human Smad2

Application

Dilution Ratio	WB: 1:1000
Molecular Weight	52,48kDa

**Product Name: Phospho-Smad2 (S255) (16D10) Rabbit
Monoclonal Antibody
Catalog #: AMRe06009**

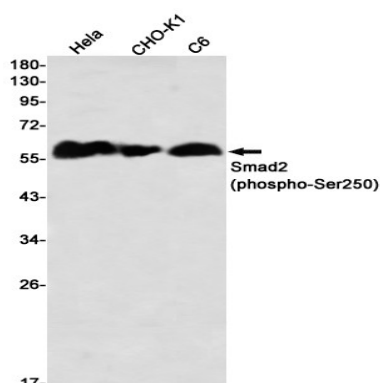


Background

SMAD proteins are signal transducers and transcriptional modulators that mediate multiple signaling pathways. This protein mediates the signal of the transforming growth factor (TGF)-beta, and thus regulates multiple cellular processes, such as cell proliferation, apoptosis, and differentiation. Receptor-regulated SMAD (R-SMAD) that is an intracellular signal transducer and transcriptional modulator activated by TGF-beta (transforming growth factor) and activin type 1 receptor kinases. Binds the TRE element in the promoter region of many genes that are regulated by TGF-beta and, on formation of the SMAD2/SMAD4 complex, activates transcription. May act as a tumor suppressor in colorectal carcinoma. Positively regulates PDPK1 kinase activity by stimulating its dissociation from the 14-3-3 protein YWHAQ which acts as a negative regulator.

Research Area

Image Data



Western blot detection of Smad2 (phospho-Ser250) in HeLa, CHO-K1, C6 using Smad2 (phospho-Ser250) antibody (1:1000 diluted).

Note

For research use only.