

Product Name: Phospho-Phospholamban (S16) (3B11)
Rabbit Monoclonal Antibody
Catalog #: AMRe05966



Summary

| | |
|------------------------|---|
| Production Name | Phospho-Phospholamban (S16) (3B11) Rabbit Monoclonal Antibody |
| Description | Rabbit Monoclonal Antibody |
| Host | Rabbit |
| Application | WB |
| Reactivity | Human,Mouse,Rat |

Performance

| | |
|---------------------|--|
| Conjugation | Unconjugated |
| Modification | Phospho Antibody |
| Isotype | IgG |
| Clonality | Monoclonal |
| Form | Liquid |
| Storage | Store at 4°C short term. Aliquot and store at -20°C long term. Avoid freeze/thaw cycles. |
| Buffer | Supplied in 50mM Tris-Glycine(pH 7.4), 0.15M NaCl, 40%Glycerol, 0.01% New type preservative N and 0.05% BSA. |
| Purification | Affinity purification |

Immunogen

| | |
|--------------------------|---|
| Gene Name | PLN |
| Alternative Names | Cardiac phospholamban; CMD1P; CMH18; PLB; Pln; |
| Gene ID | 5350.0 |
| SwissProt ID | P26678.Recombinant protein of human Phospholamban |

Application

| | |
|-------------------------|------------|
| Dilution Ratio | WB: 1:1000 |
| Molecular Weight | 6kDa |

Background

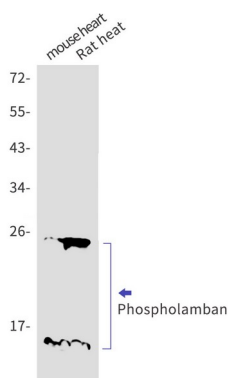
Product Name: Phospho-Phospholamban (S16) (3B11)
Rabbit Monoclonal Antibody
Catalog #: AMRe05966



Reversibly inhibits the activity of ATP2A2 in cardiac sarcoplasmic reticulum by decreasing the apparent affinity of the ATPase for Ca^{2+} . Modulates the contractility of the heart muscle in response to physiological stimuli via its effects on ATP2A2. Reversibly inhibits the activity of ATP2A2 in cardiac sarcoplasmic reticulum by decreasing the apparent affinity of the ATPase for Ca^{2+} (PubMed:28890335). Modulates the contractility of the heart muscle in response to physiological stimuli via its effects on ATP2A2. Modulates calcium re-uptake during muscle relaxation and plays an important role in calcium homeostasis in the heart muscle. The degree of ATP2A2 inhibition depends on the oligomeric state of PLN. ATP2A2 inhibition is alleviated by PLN phosphorylation.

Research Area

Image Data



Western blot detection of Phospholamban in mouse heart, Rat heart cell lysates using Phospholamban antibody(1:1000 diluted).

Note

For research use only.