

Product Name: Phospho-CDC37 (S13) (15P11) Rabbit Monoclonal Antibody
Catalog #: AMRe05869



Summary

Production Name	Phospho-CDC37 (S13) (15P11) Rabbit Monoclonal Antibody
Description	Rabbit Monoclonal Antibody
Host	Rabbit
Application	WB
Reactivity	Human,Mouse,Rat

Performance

Conjugation	Unconjugated
Modification	Phospho Antibody
Isotype	IgG
Clonality	Monoclonal
Form	Liquid
Storage	Store at 4°C short term. Aliquot and store at -20°C long term. Avoid freeze/thaw cycles.
Buffer	Supplied in 50mM Tris-Glycine(pH 7.4), 0.15M NaCl, 40%Glycerol, 0.01% New type preservative N and 0.05% BSA.
Purification	Affinity purification

Immunogen

Gene Name	CDC37
Alternative Names	CC37; Hsp90 chaperone protein kinase-targeting subunit; Hsp90 co-chaperone Cdc37;
Gene ID	11140.0
SwissProt ID	Q16543.A synthetic phosphopeptide corresponding to residues surrounding Ser13 of human Cdc37

Application

Dilution Ratio	WB: 1:1000
Molecular Weight	45kDa

**Product Name: Phospho-CDC37 (S13) (15P11) Rabbit
Monoclonal Antibody
Catalog #: AMRe05869**

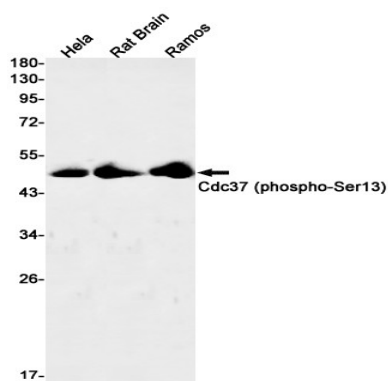


Background

CDC37 is an important component of the HSP90 chaperone complex. It was initially identified for its involvement in cell-cycle progression and was later found to have a much broader role as a chaperone for a wide variety of kinases and other proteins. CDC37 protein has an amino-terminal kinase binding domain followed by a central HSP90 binding domain. Co-chaperone that binds to numerous kinases and promotes their interaction with the Hsp90 complex, resulting in stabilization and promotion of their activity (PubMed: <http://www.uniprot.org/citations/8666233> target="_blank">8666233). Inhibits HSP90AA1 ATPase activity (PubMed: <http://www.uniprot.org/citations/23569206> target="_blank">23569206).

Research Area

Image Data



Western blot detection of Cdc37 (phospho-Ser13) in HeLa,Rat Brain,Ramos cell lysates using Cdc37 (phospho-Ser13) antibody(1:1000 diluted).

Note

For research use only.