

Product Name: phospho-Phospholipase C gamma 1/PLC-gamma-1 (Y1253)(14A10) Rabbit Monoclonal Antibody
Catalog #: AMRe05243

Summary

Production Name	phospho-Phospholipase C gamma 1/PLC-gamma-1 (Y1253)(14A10) Rabbit Monoclonal Antibody
Description	Rabbit Monoclonal Antibody
Host	Rabbit
Application	WB
Reactivity	Human,Mouse,Rat

Performance

Conjugation	Unconjugated
Modification	Phospho Antibody
Isotype	IgG
Clonality	Monoclonal
Form	Liquid
Storage	Store at 4°C short term. Aliquot and store at -20°C long term. Avoid freeze/thaw cycles.
Buffer	Supplied in 50mM Tris-Glycine(pH 7.4), 0.15M NaCl, 40%Glycerol, 0.01% New type preservative N and 0.05% BSA.
Purification	Affinity purification

Immunogen

Gene Name	PLCG1
Alternative Names	PLC-148; PLC-II; PLC-gamma1; PLC1; PLCG-1; Phospholipase C-gamma-1;
Gene ID	5335.0
SwissProt ID	P19174.A synthetic peptide of human Phospholipase C gamma 1/PLC-gamma-1

Application

Dilution Ratio	WB: 1:2000
Molecular Weight	149kDa

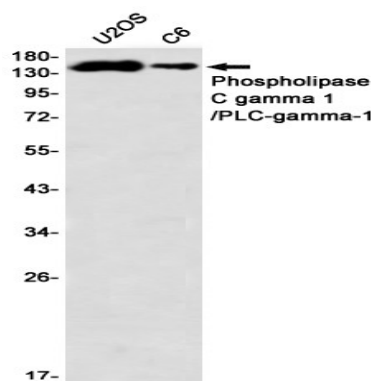
Product Name: phospho-Phospholipase C gamma 1/PLC-gamma-1 (Y1253)(14A10) Rabbit Monoclonal Antibody
Catalog #: AMRe05243

Background

Plays a role in actin reorganization and cell migration. The production of the second messenger molecules diacylglycerol (DAG) and inositol 1,4,5-trisphosphate (IP3) is mediated by activated phosphatidylinositol-specific phospholipase C enzymes. Major substrate for heparin-binding growth factor 1 (acidic fibroblast growth factor)-activated tyrosine kinase. Mediates the production of the second messenger molecules diacylglycerol (DAG) and inositol 1,4,5-trisphosphate (IP3). Plays an important role in the regulation of intracellular signaling cascades. Becomes activated in response to ligand-mediated activation of receptor-type tyrosine kinases, such as PDGFRA, PDGFRB, EGFR, FGFR1, FGFR2, FGFR3 and FGFR4 (By similarity). Plays a role in actin reorganization and cell migration (PubMed:17229814).

Research Area

Image Data



Western blot detection of Phospholipase C gamma 1/PLC-gamma-1 in U2OS,C6 using Phospholipase C gamma 1/PLC-gamma-1 antibody(1:1000 diluted).

Note

For research use only.