

**Product Name: Pyruvate Dehydrogenase E2 Rabbit
Monoclonal Antibody
Catalog #: AMRe04132**



Summary

Production Name	Pyruvate Dehydrogenase E2 Rabbit Monoclonal Antibody
Description	Recombinant Rabbit Monoclonal antibody
Host	Rabbit
Application	WB, ICC/IF, IP
Reactivity	Human, Mouse, Rat, Hamster

Performance

Conjugation	Unconjugated
Modification	Unmodified
Isotype	IgG
Clonality	Monoclonal Antibody
Form	Liquid
Storage	Store at 4°C short term. Aliquot and store at -20°C long term. Avoid freeze/thaw cycles.
Buffer	50mM Tris-Glycine(pH 7.4), 0.15M NaCl, 40% Glycerol, 0.01% Sodium azide and 0.05% BSA
Purification	Affinity Purified

Immunogen

Gene Name	DLAT
Alternative Names	DLAT; DLTA; E2; PBC; PDCE2
Gene ID	1737
SwissProt ID	P10515

Application

Dilution Ratio	WB: 1/500-1/1000 IF: 1/50-1/200 IP: 1/20
Molecular Weight	Calculated MW: 69 kDa; Observed MW: 69 kDa

**Product Name: Pyruvate Dehydrogenase E2 Rabbit
Monoclonal Antibody**
Catalog #: AMRe04132



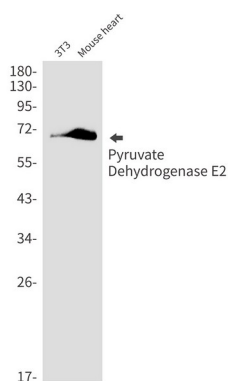
Background

The pyruvate dehydrogenase complex catalyzes the overall conversion of pyruvate to acetyl-CoA and CO₂. It contains multiple copies of three enzymatic components: pyruvate dehydrogenase (E1), dihydrolipoamide acetyltransferase (E2) and lipoamide dehydrogenase (E3).

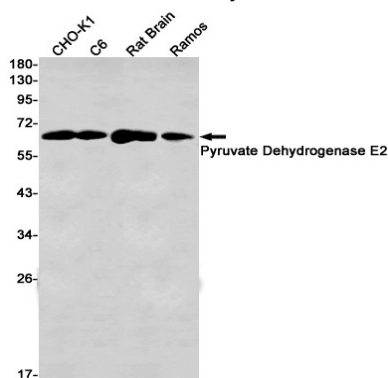
Research Area

Signal Transduction

Image Data

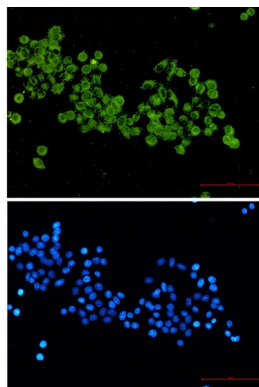


Western blot analysis of Pyruvate Dehydrogenase E2 in 3T3, mouse heart lysates using Pyruvate Dehydrogenase E2 antibody.



Western blot analysis of Pyruvate Dehydrogenase E2 in CHO-K1, C6, rat Brain, Ramos lysates using Pyruvate Dehydrogenase E2 antibody.

**Product Name: Pyruvate Dehydrogenase E2 Rabbit
Monoclonal Antibody
Catalog #: AMRe04132**



Immunocytochemistry analysis of Pyruvate Dehydrogenase E2 (green) in hela using Pyruvate Dehydrogenase E2 antibody, and DAPI(blue)

Note

For research use only.