

**Product Name: Phospho-Cyclin B1 (Ser126) Rabbit
Monoclonal Antibody
Catalog #: AMRe04112**

Summary

Production Name	Phospho-Cyclin B1 (Ser126) Rabbit Monoclonal Antibody
Description	Recombinant Rabbit Monoclonal antibody
Host	Rabbit
Application	WB,IP
Reactivity	Human

Performance

Conjugation	Unconjugated
Modification	Phosphorylated
Isotype	IgG
Clonality	Monoclonal Antibody
Form	Liquid
Storage	Store at 4°C short term. Aliquot and store at -20°C long term. Avoid freeze/thaw cycles.
Buffer	50mM Tris-Glycine(pH 7.4), 0.15M NaCl, 40% Glycerol, 0.01% Sodium azide and 0.05% BSA
Purification	Affinity Purified

Immunogen

Gene Name	CCNB1
Alternative Names	CCNB1; CCNB; G2/mitotic-specific cyclin-B1
Gene ID	891
SwissProt ID	P14635

Application

Dilution Ratio	WB: 1/500-1/1000 IP: 1/20
Molecular Weight	Calculated MW: 48 kDa; Observed MW: 55 kDa

**Product Name: Phospho-Cyclin B1 (Ser126) Rabbit
Monoclonal Antibody
Catalog #: AMRe04112**



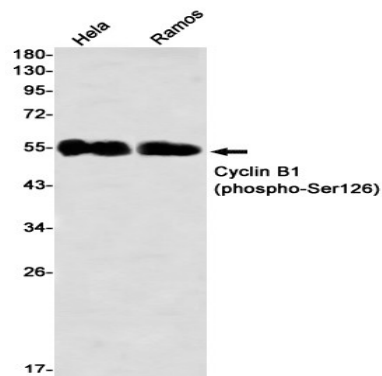
Background

Essential for the control of the cell cycle at the G2/M (mitosis) transition. a member of the highly conserved cyclin family, whose members are characterized by a dramatic periodicity in protein abundance through the cell cycle. Cyclins function as regulators of CDK kinases.

Research Area

Cell Biology

Image Data



Western blot analysis of Cyclin B1 (Phospho-Ser126) in HeLa, Ramos lysates using Phospho-Cyclin B1 (Ser126) antibody.

Note

For research use only.