

Product Name: Presenilin 1 Rabbit Monoclonal Antibody
Catalog #: AMRe04102

Summary

Production Name	Presenilin 1 Rabbit Monoclonal Antibody
Description	Recombinant Rabbit Monoclonal antibody
Host	Rabbit
Application	WB,ICC/IF,IP
Reactivity	Human,Mouse,Rat

Performance

Conjugation	Unconjugated
Modification	Unmodified
Isotype	IgG
Clonality	Monoclonal Antibody
Form	Liquid
Storage	Store at 4°C short term. Aliquot and store at -20°C long term. Avoid freeze/thaw cycles.
Buffer	50mM Tris-Glycine(pH 7.4), 0.15M NaCl, 40% Glycerol, 0.01% Sodium azide and 0.05% BSA
Purification	Affinity Purified

Immunogen

Gene Name	PSEN1
Alternative Names	PSEN1; AD3; PS1; PSNL1; Presenilin-1; PS-1; Protein S182
Gene ID	5663
SwissProt ID	P49768

Application

Dilution Ratio	WB: 1/500-1/1000 IF: 1/50-1/200 IP: 1/20
Molecular Weight	Calculated MW: 53 kDa; Observed MW: 20 kDa

Background

Product Name: Presenilin 1 Rabbit Monoclonal Antibody
Catalog #: AMRe04102

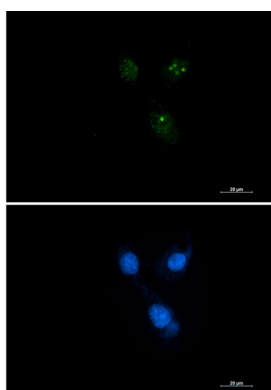


Probable catalytic subunit of the gamma-secretase complex, an endoprotease complex that catalyzes the intramembrane cleavage of integral membrane proteins such as Notch receptors and APP (beta-amyloid precursor protein). Requires the other members of the gamma-secretase complex to have a protease activity.

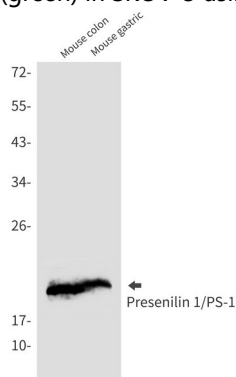
Research Area

Neuroscience

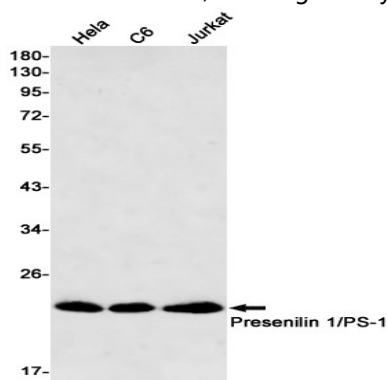
Image Data



Immunocytochemistry analysis of Presenilin 1 (green) in SKOV-3 using Presenilin 1 antibody, and DAPI (blue).



Western blot analysis of Presenilin 1/PS1 in mouse colon, mouse gastric lysates using Presenilin 1/PS1 antibody.



Western blot analysis of Presenilin 1/PS1 in HeLa, C6, Jurkat lysates using Presenilin 1/PS1 antibody



Product Name: Presenilin 1 Rabbit Monoclonal Antibody
Catalog #: AMRe04102

Note

For research use only.