

**Product Name: Placental Alkaline Phosphatase Rabbit  
Monoclonal Antibody**  
**Catalog #: AMRe04101**

---



## Summary

<b>Production Name</b>	Placental Alkaline Phosphatase Rabbit Monoclonal Antibody
<b>Description</b>	Recombinant Rabbit Monoclonal antibody
<b>Host</b>	Rabbit
<b>Application</b>	WB
<b>Reactivity</b>	Human

## Performance

<b>Conjugation</b>	Unconjugated
<b>Modification</b>	Unmodified
<b>Isotype</b>	IgG
<b>Clonality</b>	Monoclonal Antibody
<b>Form</b>	Liquid
<b>Storage</b>	Store at 4°C short term. Aliquot and store at -20°C long term. Avoid freeze/thaw cycles.
<b>Buffer</b>	50mM Tris-Glycine(pH 7.4), 0.15M NaCl, 40% Glycerol, 0.01% Sodium azide and 0.05% BSA
<b>Purification</b>	Affinity Purified

## Immunogen

<b>Gene Name</b>	ALPP
<b>Alternative Names</b>	ALPP; PLAP; Alkaline phosphatase; placental type; Alkaline phosphatase Regan isozyme; Placental alkaline phosphatase 1; PLAP-1
<b>Gene ID</b>	250
<b>SwissProt ID</b>	P05187

## Application

<b>Dilution Ratio</b>	WB: 1/500-1/1000
<b>Molecular Weight</b>	Calculated MW: 58 kDa; Observed MW: 70 kDa

**Product Name: Placental Alkaline Phosphatase Rabbit  
Monoclonal Antibody**  
**Catalog #: AMRe04101**



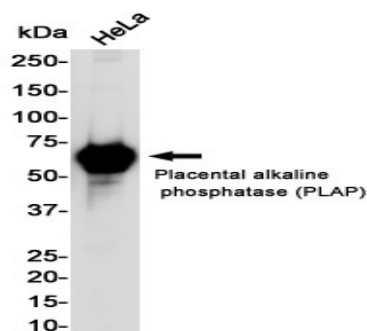
## Background

PLAP may assist in guiding migratory cells and transporting specific molecules, such as fatty acids and immunoglobulins, across the plasma membrane. The three tissue-specific APs identified in human, PLAP, germ cell AP (GCAP) and intestinal AP, are 90-98% homologous and their genes are clustered on chromosome 2q.

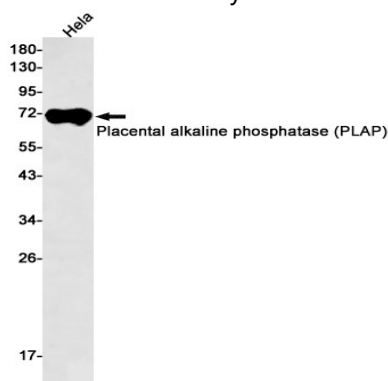
## Research Area

Tags & Cell Markers

## Image Data



Western blot analysis of Placental alkaline phosphatase (Phospho- LAP) in HeLa lysates using Placental Alkaline Phosphatase antibody.



Western blot analysis of Placental alkaline phosphatase (PLAP) in HeLa lysates using Placental alkaline phosphatase (PLAP) antibody.

## Note

For research use only.