

**Product Name: Creatine Kinase B type Rabbit  
Monoclonal Antibody  
Catalog #: AMRe04065**

---

## Summary

<b>Production Name</b>	Creatine Kinase B type Rabbit Monoclonal Antibody
<b>Description</b>	Recombinant Rabbit Monoclonal antibody
<b>Host</b>	Rabbit
<b>Application</b>	WB,IHC-P,IP
<b>Reactivity</b>	Human,Mouse,Rat

## Performance

<b>Conjugation</b>	Unconjugated
<b>Modification</b>	Unmodified
<b>Isotype</b>	IgG
<b>Clonality</b>	Monoclonal Antibody
<b>Form</b>	Liquid
<b>Storage</b>	Store at 4°C short term. Aliquot and store at -20°C long term. Avoid freeze/thaw cycles.
<b>Buffer</b>	50mM Tris-Glycine(pH 7.4), 0.15M NaCl, 40% Glycerol, 0.01% Sodium azide and 0.05% BSA
<b>Purification</b>	Affinity Purified

## Immunogen

<b>Gene Name</b>	CKB
<b>Alternative Names</b>	BCK; Ckb; CKBB; HEL 211; HEL S 29
<b>Gene ID</b>	1152
<b>SwissProt ID</b>	P12277

## Application

<b>Dilution Ratio</b>	WB: 1/500-1/1000 IHC: 1/50-1/100 IP: 1/20
<b>Molecular Weight</b>	Calculated MW: 43 kDa; Observed MW: 43 kDa

**Product Name: Creatine Kinase B type Rabbit  
Monoclonal Antibody  
Catalog #: AMRe04065**



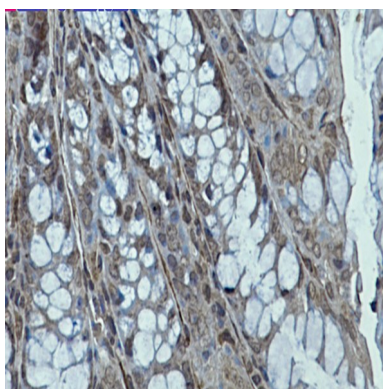
## Background

Reversibly catalyzes the transfer of phosphate between ATP and various phosphogens (e.g. creatine phosphate). Creatine kinase isoenzymes play a central role in energy transduction in tissues with large, fluctuating energy demands, such as skeletal muscle, heart, brain and spermatozoa.

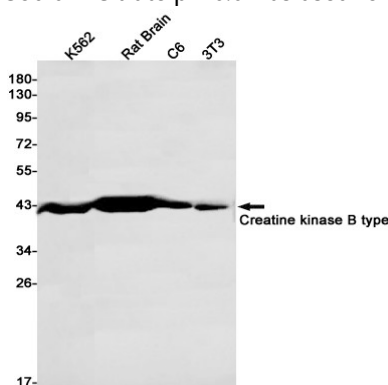
## Research Area

Neuroscience

## Image Data



Immunohistochemistry analysis of paraffin-embedded mouse colon using Creatine Kinase B type antibody. High-pressure and temperature Sodium Citrate pH 6.0 was used for antigen retrieval.



Western blot analysis of Creatine kinase B type in K562, rat Brain, C6, 3T3 lysates using Creatine kinase B type antibody.

## Note

For research use only.