

Product Name: Cyclin B1 Rabbit Monoclonal Antibody
Catalog #: AMRe04051



Summary

Production Name	Cyclin B1 Rabbit Monoclonal Antibody
Description	Recombinant Rabbit Monoclonal antibody
Host	Rabbit
Application	WB,ICC/IF,IP
Reactivity	Human

Performance

Conjugation	Unconjugated
Modification	Unmodified
Isotype	IgG
Clonality	Monoclonal Antibody
Form	Liquid
Storage	Store at 4°C short term. Aliquot and store at -20°C long term. Avoid freeze/thaw cycles.
Buffer	50mM Tris-Glycine(pH 7.4), 0.15M NaCl, 40% Glycerol, 0.01% Sodium azide and 0.05% BSA
Purification	Affinity Purified

Immunogen

Gene Name	CCNB1
Alternative Names	CCNB1; CCNB; G2/mitotic-specific cyclin-B1
Gene ID	891
SwissProt ID	P14635

Application

Dilution Ratio	WB: 1/500-1/1000 IF: 1/50-1/200 IP: 1/20
Molecular Weight	Calculated MW: 48 kDa; Observed MW: 55 kDa

Background

Product Name: Cyclin B1 Rabbit Monoclonal Antibody
Catalog #: AMRe04051

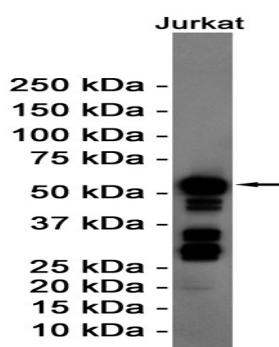


Essential for the control of the cell cycle at the G2/M (mitosis) transition. a member of the highly conserved cyclin family, whose members are characterized by a dramatic periodicity in protein abundance through the cell cycle. Cyclins function as regulators of CDK kinases.

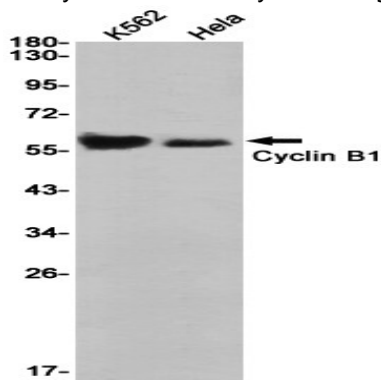
Research Area

Cell Biology

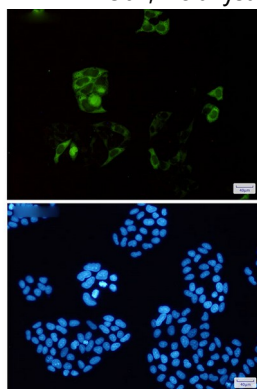
Image Data



Western blot analysis of Cyclin B1 in Jurkat lysates using Cyclin B1 antibody.



Western blot analysis of Cyclin B1 in K562, HeLa lysates using Cyclin B1 antibody.



Immunocytochemistry analysis of Cyclin B1 (green) in HeLa using Cyclin B1 antibody, and DAPI (blue)

Product Name: Cyclin B1 Rabbit Monoclonal Antibody
Catalog #: AMRe04051



Note

For research use only.