

**Product Name: Tropomyosin alpha 1 Chain Rabbit  
Monoclonal Antibody**  
**Catalog #: AMRe03995**

---

## Summary

<b>Production Name</b>	Tropomyosin alpha 1 Chain Rabbit Monoclonal Antibody
<b>Description</b>	Recombinant Rabbit Monoclonal antibody
<b>Host</b>	Rabbit
<b>Application</b>	WB,IHC-F,IHC-P
<b>Reactivity</b>	Human, Mouse, Rat

## Performance

<b>Conjugation</b>	Unconjugated
<b>Modification</b>	Unmodified
<b>Isotype</b>	IgG
<b>Clonality</b>	Monoclonal Antibody
<b>Form</b>	Liquid
<b>Storage</b>	Store at 4°C short term. Aliquot and store at -20°C long term. Avoid freeze/thaw cycles.
<b>Buffer</b>	Liquid in 50mM Tris-Glycine(pH 7.4), 0.15M NaCl, 40%Glycerol, 0.01% sodium azide and 0.05% BSA.
<b>Purification</b>	Affinity Purified

## Immunogen

<b>Gene Name</b>	TPM1
<b>Alternative Names</b>	TPM1; C15orf13; TMSA; Tropomyosin alpha-1 chain; Alpha-tropomyosin; Tropomyosin-1
<b>Gene ID</b>	7168
<b>SwissProt ID</b>	P09493

## Application

<b>Dilution Ratio</b>	WB: 1/500-1/1000 IHC: 1/50-1/100
<b>Molecular Weight</b>	Calculated MW:33 kDa;Observed MW: 33 kDa

**Product Name: Tropomyosin alpha 1 Chain Rabbit  
Monoclonal Antibody  
Catalog #: AMRe03995**

---



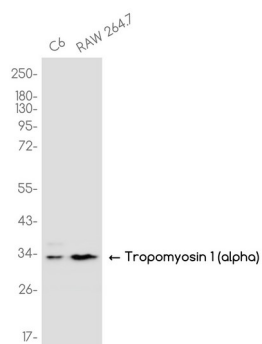
## Background

Binds to actin filaments in muscle and non-muscle cells. Plays a central role, in association with the troponin complex, in the calcium dependent regulation of vertebrate striated muscle contraction.

## Research Area

Signal Transduction

## Image Data



Western blot analysis of Tropomyosin alpha 1 Chain in C6, RAW 264.7 lysates using Tropomyosin alpha 1 Chain antibody.

## Note

For research use only.