

Product Name: Ferritin Heavy Chain Rabbit Monoclonal Antibody
Catalog #: AMRe03990

Summary

Production Name	Ferritin Heavy Chain Rabbit Monoclonal Antibody
Description	Recombinant Rabbit Monoclonal antibody
Host	Rabbit
Application	WB,IHC-F,IHC-P
Reactivity	Mouse, Rat

Performance

Conjugation	Unconjugated
Modification	Unmodified
Isotype	IgG
Clonality	Monoclonal Antibody
Form	Liquid
Storage	Store at 4°C short term. Aliquot and store at -20°C long term. Avoid freeze/thaw cycles.
Buffer	Liquid in 50mM Tris-Glycine(pH 7.4), 0.15M NaCl, 40%Glycerol, 0.01% sodium azide and 0.05% BSA.
Purification	Affinity Purified

Immunogen

Gene Name	Fth1
Alternative Names	FHC; Fth; HFT; MFH
Gene ID	14319.0
SwissProt ID	P09528

Application

Dilution Ratio	WB: 1/500-1/1000 IHC: 1/50-1/100
Molecular Weight	Calculated MW:21 kDa;Observed MW: 21 kDa

Product Name: Ferritin Heavy Chain Rabbit Monoclonal Antibody
Catalog #: AMRe03990

Background

Stores iron in a soluble, non-toxic, readily available form (By similarity).

Important for iron homeostasis (By similarity).

Has ferroxidase activity (By similarity).

Iron is taken up in the ferrous form and deposited as ferric hydroxides after oxidation (By similarity).

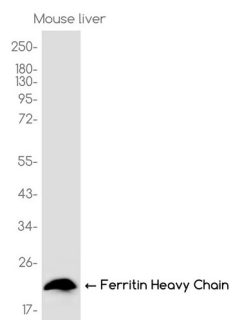
Also plays a role in delivery of iron to cells (PubMed:19154717).

Mediates iron uptake in capsule cells of the developing kidney (PubMed:19154717).

Research Area

Neuroscience

Image Data



Western blot analysis of Ferritin Heavy Chain in Mouse liver lysates using Ferritin Heavy Chain antibody.

Note

For research use only.