

**Product Name: Gephyrin Rabbit Monoclonal Antibody**  
**Catalog #: AMRe03956**



## Summary

<b>Production Name</b>	Gephyrin Rabbit Monoclonal Antibody
<b>Description</b>	Recombinant Rabbit Monoclonal antibody
<b>Host</b>	Rabbit
<b>Application</b>	WB,IHC-F,IHC-P
<b>Reactivity</b>	Human, Mouse, Rat

## Performance

<b>Conjugation</b>	Unconjugated
<b>Modification</b>	Unmodified
<b>Isotype</b>	IgG
<b>Clonality</b>	Monoclonal Antibody
<b>Form</b>	Liquid
<b>Storage</b>	Store at 4°C short term. Aliquot and store at -20°C long term. Avoid freeze/thaw cycles.
<b>Buffer</b>	Liquid in 50mM Tris-Glycine(pH 7.4), 0.15M NaCl, 40%Glycerol, 0.01% sodium azide and 0.05% BSA.
<b>Purification</b>	Affinity Purified

## Immunogen

<b>Gene Name</b>	GPHN
<b>Alternative Names</b>	Domain E; Domain G; GEPH; GPH; GPHN; GPHRYN
<b>Gene ID</b>	10243
<b>SwissProt ID</b>	Q9NQX3

## Application

<b>Dilution Ratio</b>	WB: 1/500-1/1000 IHC: 1/50-1/100
<b>Molecular Weight</b>	Calculated MW:80 kDa;Observed MW: 93 kDa

## Background

**Product Name: Gephyrin Rabbit Monoclonal Antibody**  
**Catalog #: AMRe03956**

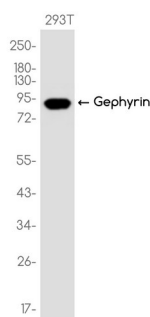


Microtubule-associated protein involved in membrane protein-cytoskeleton interactions. It is thought to anchor the inhibitory glycine receptor (GLYR) to subsynaptic microtubules (By similarity). Catalyzes two steps in the biosynthesis of the molybdenum cofactor.

## Research Area

Neuroscience

## Image Data



Western blot analysis of Gephyrin in 293T lysates using Gephyrin antibody.

## Note

For research use only.