

Product Name: SHC Rabbit Monoclonal Antibody
Catalog #: AMRe03923



Summary

| | |
|------------------------|--|
| Production Name | SHC Rabbit Monoclonal Antibody |
| Description | Recombinant Rabbit Monoclonal antibody |
| Host | Rabbit |
| Application | WB,IHC-F,IHC-P |
| Reactivity | Human, Mouse, Rat |

Performance

| | |
|---------------------|---|
| Conjugation | Unconjugated |
| Modification | Unmodified |
| Isotype | IgG |
| Clonality | Monoclonal Antibody |
| Form | Liquid |
| Storage | Store at 4°C short term. Aliquot and store at -20°C long term. Avoid freeze/thaw cycles. |
| Buffer | Liquid in 50mM Tris-Glycine(pH 7.4), 0.15M NaCl, 40%Glycerol, 0.01% sodium azide and 0.05% BSA. |
| Purification | Affinity Purified |

Immunogen

| | |
|--------------------------|--|
| Gene Name | SHC1 |
| Alternative Names | SHC1; SHC; SHCA; SHC-transforming protein 1; SHC-transforming protein 3; SHC-transforming protein A; Src homology 2 domain-containing-transforming protein C1; SH2 domain protein C1 |
| Gene ID | 6464 |
| SwissProt ID | P29353 |

Application

| | |
|-------------------------|--|
| Dilution Ratio | WB: 1/500-1/1000 IHC: 1/50-1/100 |
| Molecular Weight | Calculated MW:63 kDa;Observed MW: 46,52,66 kDa |

Product Name: SHC Rabbit Monoclonal Antibody
Catalog #: AMRe03923



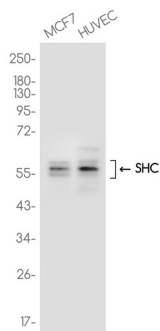
Background

Signaling adapter that couples activated growth factor receptors to signaling pathways. Participates in a signaling cascade initiated by activated KIT and KITLG/SCF. Isoform p46Shc and isoform p52Shc, once phosphorylated, couple activated receptor tyrosine kinases to Ras via the recruitment of the GRB2/SOS complex and are implicated in the cytoplasmic propagation of mitogenic signals.

Research Area

Neuroscience

Image Data



Western blot analysis of SHC in MCF7, HUVEC lysates using SHC antibody.

Note

For research use only.