

Product Name: Phospho-STAT1 (Ser727) Rabbit Monoclonal Antibody
Catalog #: AMRe03797

Summary

Production Name	Phospho-STAT1 (Ser727) Rabbit Monoclonal Antibody
Description	Recombinant Rabbit Monoclonal antibody
Host	Rabbit
Application	WB,IHC-P
Reactivity	Human,Mouse,Rat

Performance

Conjugation	Unconjugated
Modification	Phosphorylated
Isotype	IgG
Clonality	Monoclonal Antibody
Form	Liquid
Storage	Store at 4°C short term. Aliquot and store at -20°C long term. Avoid freeze/thaw cycles.
Buffer	50mM Tris-Glycine(pH 7.4), 0.15M NaCl, 40% Glycerol, 0.01% Sodium azide and 0.05% BSA
Purification	Affinity Purified

Immunogen

Gene Name	STAT1
Alternative Names	STAT1; Signal transducer and activator of transcription 1-alpha/beta; Transcription factor ISGF-3 components p91/p84
Gene ID	6772
SwissProt ID	P42224

Application

Dilution Ratio	WB: 1/500-1/1000 IHC: 1/50-1/100
Molecular Weight	Calculated MW: 87 kDa; Observed MW: 87 kDa

**Product Name: Phospho-STAT1 (Ser727) Rabbit
Monoclonal Antibody
Catalog #: AMRe03797**



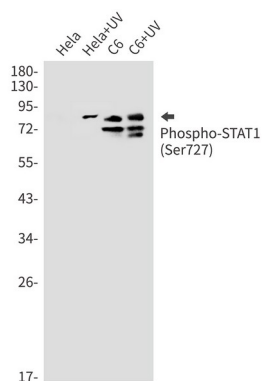
Background

The protein encoded by this gene is a member of the STAT protein family. In response to cytokines and growth factors, STAT family members are phosphorylated by the receptor associated kinases, and then form homo- or heterodimers that translocate to the cell nucleus where they act as transcription activators.

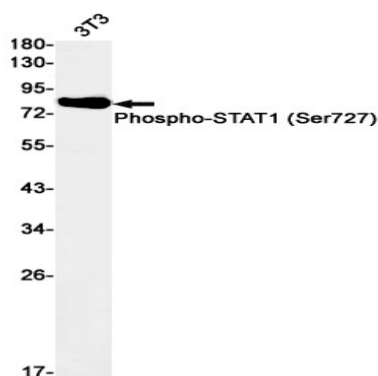
Research Area

Signal Transduction

Image Data



Western blot analysis of Phospho-STAT1 (Ser727) in HeLa, HeLa+UV, C6, C6+UV lysates using Phospho-STAT1 (Ser727) antibody.



Western blot analysis of Phospho-STAT1 (Ser727) in 3T3 lysates using Phospho-STAT1 (Ser727) antibody.

Note

For research use only.