

Product Name: Alkaline Phosphatase Rabbit Monoclonal Antibody
Catalog #: AMRe03760

Summary

Production Name	Alkaline Phosphatase Rabbit Monoclonal Antibody
Description	Recombinant Rabbit Monoclonal antibody
Host	Rabbit
Application	WB,IHC-F,IHC-P,ICC/IF,IP
Reactivity	Human,Rat

Performance

Conjugation	Unconjugated
Modification	Unmodified
Isotype	IgG
Clonality	Monoclonal Antibody
Form	Liquid
Storage	Store at 4°C short term. Aliquot and store at -20°C long term. Avoid freeze/thaw cycles.
Buffer	50mM Tris-Glycine(pH 7.4), 0.15M NaCl, 40% Glycerol, 0.01% Sodium azide and 0.05% BSA
Purification	Affinity Purified

Immunogen

Gene Name	ALPL
Alternative Names	ALPL; Alkaline phosphatase; tissue-nonspecific isozyme; AP-TNAP; TNSALP; Alkaline phosphatase liver/bone/kidney isozyme
Gene ID	249
SwissProt ID	P05186

Application

Dilution Ratio	WB: 1/500-1/1000 IHC: 1/50-1/100 IF: 1/50-1/200 IP: 1/20
Molecular Weight	Calculated MW: 57 kDa; Observed MW: 75 kDa

Product Name: Alkaline Phosphatase Rabbit Monoclonal Antibody
Catalog #: AMRe03760



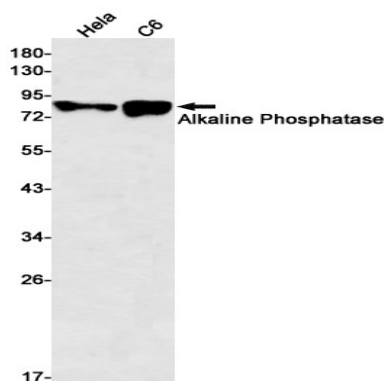
Background

There are at least four distinct but related alkaline phosphatases: intestinal, placental, placental-like, and liver/bone/kidney (tissue non-specific). The first three are located together on chromosome 2, while the tissue non-specific form is located on chromosome 1. The product of this gene is a membrane bound glycosylated enzyme that is not expressed in any particular tissue and is, therefore, referred to as the tissue-nonspecific form of the enzyme.

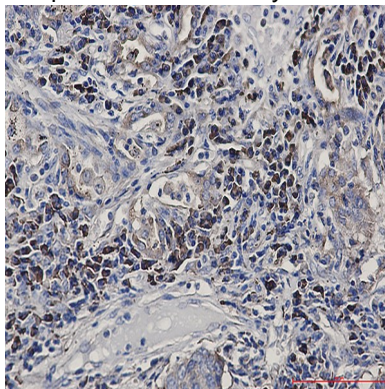
Research Area

Cell Biology

Image Data

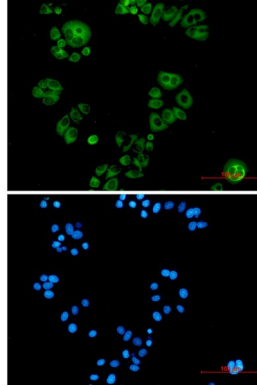


Western blot analysis of Alkaline Phosphatase in HeLa, C6 lysates using Alkaline Phosphatase antibody.



Immunohistochemistry analysis of paraffin-embedded Human lung cancer using Alkaline Phosphatase, NonSpecific antibody. High-pressure and temperature Sodium Citrate pH 6.0 was used for antigen retrieval.

Product Name: Alkaline Phosphatase Rabbit Monoclonal Antibody
Catalog #: AMRe03760



Immunocytochemistry analysis of Alkaline Phosphatase, NonSpecific (green) in hela using Alkaline Phosphatase, NonSpecific antibody, and DAPI(blue)

Note

For research use only.