

Product Name: Cytochrome C Rabbit Monoclonal Antibody
Catalog #: AMRe03749

Summary

Production Name	Cytochrome C Rabbit Monoclonal Antibody
Description	Recombinant Rabbit Monoclonal antibody
Host	Rabbit
Application	WB,IHC-P,IP
Reactivity	Human,Mouse,Rat

Performance

Conjugation	Unconjugated
Modification	Unmodified
Isotype	IgG
Clonality	Monoclonal Antibody
Form	Liquid
Storage	Store at 4°C short term. Aliquot and store at -20°C long term. Avoid freeze/thaw cycles.
Buffer	50mM Tris-Glycine(pH 7.4), 0.15M NaCl, 40% Glycerol, 0.01% Sodium azide and 0.05% BSA
Purification	Affinity Purified

Immunogen

Gene Name	CYCS
Alternative Names	CYCS; CYC; Cytochrome c
Gene ID	54205
SwissProt ID	P99999

Application

Dilution Ratio	WB: 1/500-1/1000 IHC: 1/50-1/100 IP: 1/20
Molecular Weight	Calculated MW: 12 kDa; Observed MW: 12 kDa

Product Name: Cytochrome C Rabbit Monoclonal Antibody
Catalog #: AMRe03749



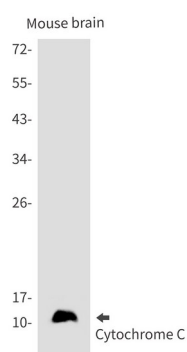
Background

CYCS Electron carrier protein. The oxidized form of the cytochrome c heme group can accept an electron from the heme group of the cytochrome c1 subunit of cytochrome reductase. Cytochrome c then transfers this electron to the cytochrome oxidase complex, the final protein carrier in the mitochondrial electron-transport chain.

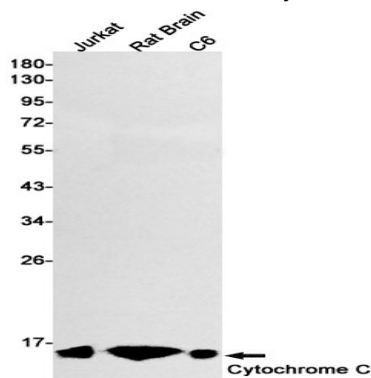
Research Area

Cardiovascular

Image Data

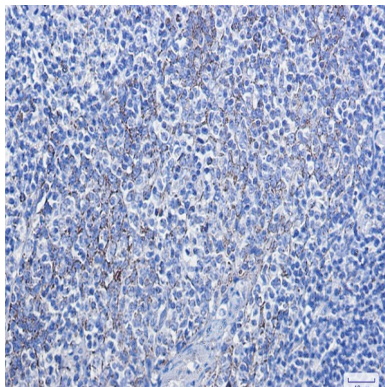


Western blot analysis of Cytochrome C in mouse brain lysates using Cytochrome C antibody.



Western blot analysis of Cytochrome C in Jurkat, rat Brain, C6 lysates using Cytochrome C antibody.

Product Name: Cytochrome C Rabbit Monoclonal Antibody
Catalog #: AMRe03749



Immunohistochemistry analysis of paraffin-embedded Human tonsil using Cytochrome C antibody. High-pressure and temperature Sodium Citrate pH 6.0 was used for antigen retrieval.

Note

For research use only.