

Summary

Production Name	Klotho Rabbit Monoclonal Antibody
Description	Recombinant Rabbit Monoclonal antibody
Host	Rabbit
Application	WB,IHC-P
Reactivity	Human,Mouse

Performance

Conjugation	Unconjugated
Modification	Unmodified
Isotype	IgG
Clonality	Monoclonal Antibody
Form	Liquid
Storage	Store at 4°C short term. Aliquot and store at -20°C long term. Avoid freeze/thaw cycles.
Buffer	Rabbit IgG in phosphate buffered saline , pH 7.4, 150mM NaCl, 0.02% sodium azide and 50% glycerol.
Purification	Affinity Chromatography

Immunogen

Gene Name	KL
Alternative Names	KI; Klotho peptide
Gene ID	9365
SwissProt ID	Q9UEF7

Application

Dilution Ratio	WB: 1/500-1/1000 IHC: 1/50-1/100
Molecular Weight	Calculated MW: 116 kDa; Observed MW: 62 kDa

Background

Product Name: Klotho Rabbit Monoclonal Antibody
Catalog #: AMRe03301

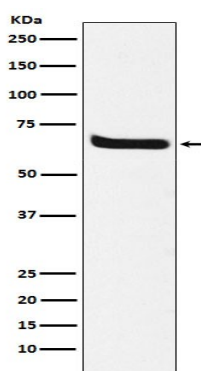


May have weak glycosidase activity towards glucuronylated steroids. However, it lacks essential active site Glu residues at positions 239 and 872, suggesting it may be inactive as a glycosidase in vivo. May be involved in the regulation of calcium and phosphorus homeostasis by inhibiting the synthesis of active vitamin D (By similarity).

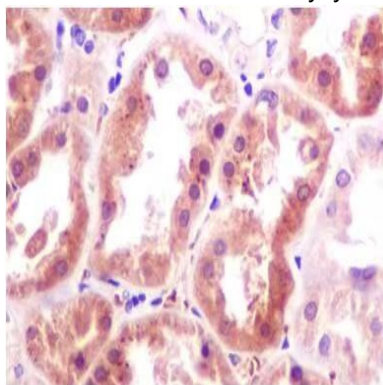
Research Area

Signal Transduction

Image Data



Western blot analysis of Klotho in Human fetal kidney lysates using Klotho antibody.



Immunohistochemistry analysis of paraffin-embedded Human fetal kidney using klotho antibody. High-pressure and temperature Sodium Citrate pH 6.0 was used for antigen retrieval.

Note

For research use only.