

## Summary

<b>Production Name</b>	CRCP Rabbit Monoclonal Antibody
<b>Description</b>	Recombinant Rabbit Monoclonal antibody
<b>Host</b>	Rabbit
<b>Application</b>	WB,IHC-F,IHC-P,ICC/IF,IP
<b>Reactivity</b>	Human,Mouse,Rat

## Performance

<b>Conjugation</b>	Unconjugated
<b>Modification</b>	Unmodified
<b>Isotype</b>	IgG
<b>Clonality</b>	Monoclonal Antibody
<b>Form</b>	Liquid
<b>Storage</b>	Store at 4°C short term. Aliquot and store at -20°C long term. Avoid freeze/thaw cycles.
<b>Buffer</b>	50mM Tris-Glycine(pH 7.4), 0.15M NaCl, 40% Glycerol, 0.01% Sodium azide and 0.05% BSA
<b>Purification</b>	Affinity Purified

## Immunogen

<b>Gene Name</b>	CRCP
<b>Alternative Names</b>	C17; RCP; RCP9; RPC9; POLR3I; POLR3J; CGRPRCP; CGRP-RCP
<b>Gene ID</b>	27297
<b>SwissProt ID</b>	O75575

## Application

<b>Dilution Ratio</b>	WB: 1/500-1/1000 IHC: 1/50-1/100 IF: 1/50-1/200 IP: 1/20
<b>Molecular Weight</b>	Calculated MW: 17 kDa; Observed MW: 17 kDa

## Background

**Product Name: CRCP Rabbit Monoclonal Antibody**  
**Catalog #: AMRe03297**

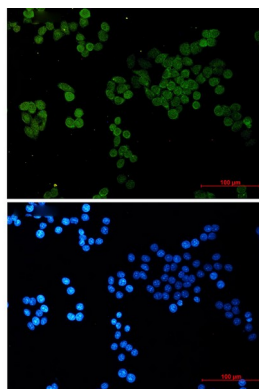


DNA-dependent RNA polymerase catalyzes the transcription of DNA into RNA using the four ribonucleoside triphosphates as substrates.

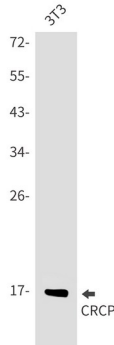
## Research Area

Neuroscience

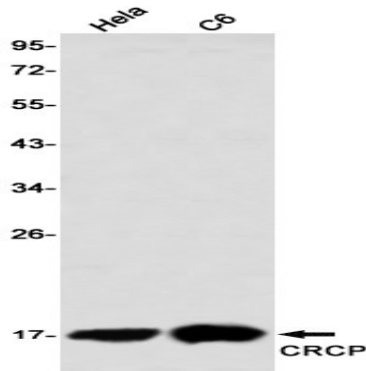
## Image Data



Immunocytochemistry analysis of CRCP (green) in HeLa using CRCP antibody, and DAPI (blue).



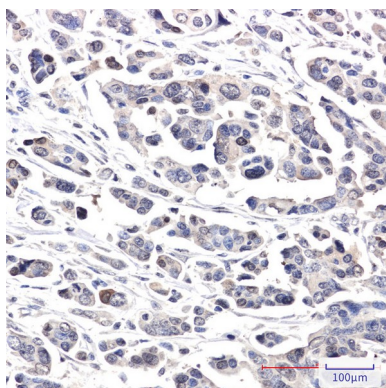
Western blot analysis of CRCP in 3T3 lysates using CRCP antibody.



Western blot analysis of CRCP in HeLa, C6 lysates using CRCP antibody

**Product Name: CRCP Rabbit Monoclonal Antibody**  
**Catalog #: AMRe03297**

---



Immunohistochemistry analysis of paraffin-embedded Human Cholangiocarcinoma using CRCP antibody. High-pressure and temperature Sodium Citrate pH 6.0 was used for antigen retrieval.

#### **Note**

For research use only.