

Product Name: Raf1 Rabbit Monoclonal Antibody
Catalog #: AMRe03293



Summary

Production Name	Raf1 Rabbit Monoclonal Antibody
Description	Recombinant Rabbit Monoclonal antibody
Host	Rabbit
Application	WB,ICC/IF
Reactivity	Human,Mouse,Rat

Performance

Conjugation	Unconjugated
Modification	Unmodified
Isotype	IgG
Clonality	Monoclonal Antibody
Form	Liquid
Storage	Store at 4°C short term. Aliquot and store at -20°C long term. Avoid freeze/thaw cycles.
Buffer	50mM Tris-Glycine(pH 7.4), 0.15M NaCl, 40% Glycerol, 0.01% Sodium azide and 0.05% BSA
Purification	Affinity Purified

Immunogen

Gene Name	RAF1
Alternative Names	RAF1; RAF; RAF proto-oncogene serine/threonine-protein kinase; Proto-oncogene c-RAF; cRaf; Raf-1
Gene ID	5894
SwissProt ID	P04049

Application

Dilution Ratio	WB: 1/500-1/1000 IF: 1/50-1/200
Molecular Weight	Calculated MW: 73 kDa; Observed MW: 73 kDa

Product Name: Raf1 Rabbit Monoclonal Antibody
Catalog #: AMRe03293



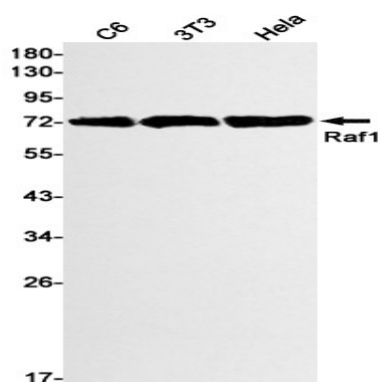
Background

Raf-1 is a MAP kinase kinase kinase (MAP3K) which functions downstream of the Ras family of membrane associated GTPases to which it binds directly. Once activated Raf-1 can phosphorylate to activate the dual specificity protein kinases MEK1 and MEK2 which in turn phosphorylate to activate the serine/threonine specific protein kinases ERK1 and ERK2.

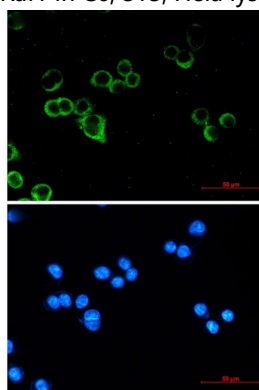
Research Area

Signal Transduction

Image Data



Western blot analysis of Raf1 in C6, 3T3, HeLa lysates using Raf1 antibody.



Immunocytochemistry analysis of Raf1 (green) in MCF-7 using Raf1 antibody, and DAPI (blue)

Note

For research use only.