

Product Name: MEF2A/MEF2C Rabbit Monoclonal Antibody
Catalog #: AMRe03269

Summary

Production Name	MEF2A/MEF2C Rabbit Monoclonal Antibody
Description	Recombinant Rabbit Monoclonal antibody
Host	Rabbit
Application	WB
Reactivity	Human,Mouse,Rat

Performance

Conjugation	Unconjugated
Modification	Unmodified
Isotype	IgG
Clonality	Monoclonal Antibody
Form	Liquid
Storage	Store at 4°C short term. Aliquot and store at -20°C long term. Avoid freeze/thaw cycles.
Buffer	50mM Tris-Glycine(pH 7.4), 0.15M NaCl, 40% Glycerol, 0.01% Sodium azide and 0.05% BSA
Purification	Affinity Purified

Immunogen

Gene Name	MEF2C/MEF2A
Alternative Names	ADCAD1; MEF2; MEF2A; Myocyte enhancer factor 2A; RSRFC4; RSRFC9
Gene ID	4208/4205
SwissProt ID	Q06413/Q02078

Application

Dilution Ratio	WB: 1/500-1/1000
Molecular Weight	Calculated MW: 51 kDa; Observed MW: 51 kDa

Product Name: MEF2A/MEF2C Rabbit Monoclonal Antibody
Catalog #: AMRe03269



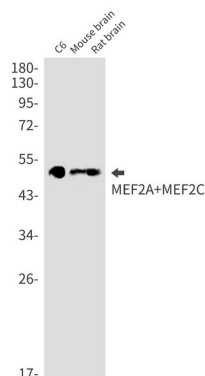
Background

Transcription activator which binds specifically to the MEF2 element present in the regulatory regions of many muscle-specific genes. Controls cardiac morphogenesis and myogenesis, and is also involved in vascular development. Plays an essential role in hippocampal-dependent learning and memory by suppressing the number of excitatory synapses and thus regulating basal and evoked synaptic transmission. Crucial for normal neuronal development, distribution, and electrical activity in the neocortex.

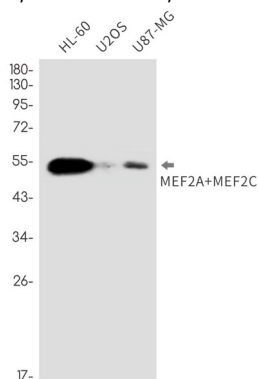
Research Area

Signal Transduction

Image Data



Western blot analysis of MEF2A+MEF2C in C6, mouse brain, rat brain lysates using MEF2A/MEF2C antibody.



Western blot analysis of MEF2A+MEF2C in HL-60, U2OS, U87-MG lysates using MEF2A+MEF2C antibody.

Note

For research use only.