

Product Name: Ubiquitin K63 Rabbit Monoclonal Antibody
Catalog #: AMRe03251

Summary

Production Name	Ubiquitin K63 Rabbit Monoclonal Antibody
Description	Recombinant Rabbit Monoclonal antibody
Host	Rabbit
Application	WB,IHC-F,IHC-P,ICC/IF
Reactivity	Human

Performance

Conjugation	Unconjugated
Modification	Unmodified
Isotype	IgG
Clonality	Monoclonal Antibody
Form	Liquid
Storage	Store at 4°C short term. Aliquot and store at -20°C long term. Avoid freeze/thaw cycles.
Buffer	50mM Tris-Glycine(pH 7.4), 0.15M NaCl, 40% Glycerol, 0.01% Sodium azide and 0.05% BSA
Purification	Affinity Purified

Immunogen

Gene Name	UBB
Alternative Names	FLJ25987; MGC8385; ubiquitin B; Ubiquitin; UBCEP1; UBCEP2; RPS27A
Gene ID	7314
SwissProt ID	POCG47

Application

Dilution Ratio	WB: 1/500-1/1000 IHC: 1/50-1/100 IF: 1/50-1/200
Molecular Weight	Calculated MW: 26 kDa; Observed MW: 8 kDa

Product Name: Ubiquitin K63 Rabbit Monoclonal Antibody
Catalog #: AMRe03251

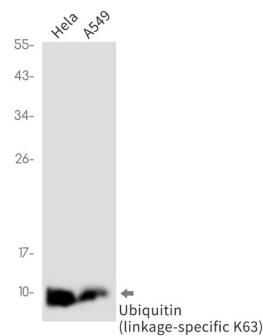
Background

Plays an important role in the ubiquitin-proteasome pathway. Ubiquitin can be covalently linked to many cellular proteins by the ubiquitination process, which targets proteins for degradation by the 26S proteasome. Three components are involved in the target protein-ubiquitin conjugation process. Ubiquitin is first activated by forming a thiolester complex with the activation component E1; the activated ubiquitin is subsequently transferred to the ubiquitin-carrier protein E2, then from E2 to ubiquitin ligase E3 for final delivery to the epsilon-NH2 of the target protein lysine residue.

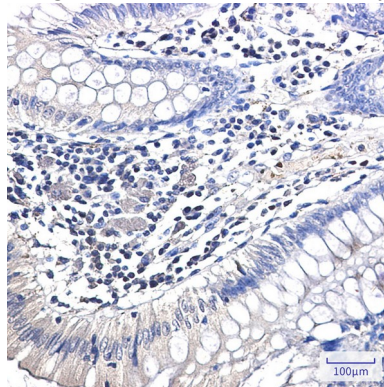
Research Area

Neuroscience

Image Data

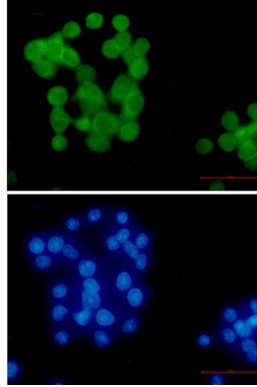


Western blot analysis of Ubiquitin (linkagespecific K63) in HeLa, A549 lysates using Ubiquitin K63 antibody.



Immunohistochemistry analysis of paraffin-embedded Human colon cancer using Ubiquitin (linkagespecific K63) antibody. High-pressure and temperature Sodium Citrate pH 6.0 was used for antigen retrieval.

Product Name: Ubiquitin K63 Rabbit Monoclonal Antibody
Catalog #: AMRe03251



Immunocytochemistry analysis of Ubiquitin (linkagespecific K63) (green) in hela using Ubiquitin (linkagespecific K63) antibody, and DAPI(blue)

Note

For research use only.