

**Product Name: SUMO Conjugating Enzyme UBC9 Rabbit Monoclonal Antibody**  
**Catalog #: AMRe03246**

---

## Summary

<b>Production Name</b>	SUMO Conjugating Enzyme UBC9 Rabbit Monoclonal Antibody
<b>Description</b>	Recombinant Rabbit Monoclonal antibody
<b>Host</b>	Rabbit
<b>Application</b>	WB,IHC-F,IHC-P,ICC/IF,IP
<b>Reactivity</b>	Human,Mouse,Rat

## Performance

<b>Conjugation</b>	Unconjugated
<b>Modification</b>	Unmodified
<b>Isotype</b>	IgG
<b>Clonality</b>	Monoclonal Antibody
<b>Form</b>	Liquid
<b>Storage</b>	Store at 4°C short term. Aliquot and store at -20°C long term. Avoid freeze/thaw cycles.
<b>Buffer</b>	50mM Tris-Glycine(pH 7.4), 0.15M NaCl, 40% Glycerol, 0.01% Sodium azide and 0.05% BSA
<b>Purification</b>	Affinity Purified

## Immunogen

<b>Gene Name</b>	UBE2I
<b>Alternative Names</b>	UBE2I; UBC9; UBCE9; SUMO-conjugating enzyme UBC9; SUMO-protein ligase; Ubiquitin carrier protein 9; Ubiquitin carrier protein I; Ubiquitin-conjugating enzyme E2 I; Ubiquitin-protein ligase I; p18
<b>Gene ID</b>	7329
<b>SwissProt ID</b>	P63279

## Application

<b>Dilution Ratio</b>	WB: 1/500-1/1000 IHC: 1/50-1/100 IF: 1/50-1/200 IP: 1/20
<b>Molecular Weight</b>	Calculated MW: 18 kDa; Observed MW: 18 kDa

---

**Product Name: SUMO Conjugating Enzyme UBC9 Rabbit Monoclonal Antibody**  
**Catalog #: AMRe03246**

---

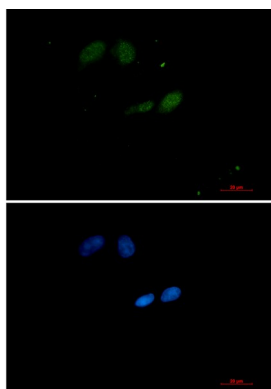
## Background

The process of SUMO-1 conjugation is similar to that seen with ubiquitin and other forms of post-translational protein modification. Like ubiquitin, SUMO-1 is conjugated to its target protein by the coordinated action of ubiquitin conjugation enzymes E1, E2 and E3. Ubc9 (or ube2M) is a highly conserved, 158 amino acid protein that acts as a SUMO-1 conjugating enzyme. Ubc9 binds to target proteins through their SUMO-1-CS (consensus sequence) domains and interacts with SUMO via the structurally conserved amino-terminal domain.

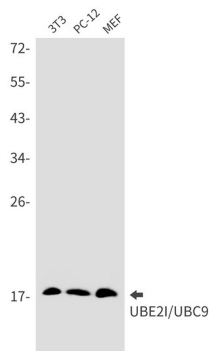
## Research Area

Cell Biology

## Image Data



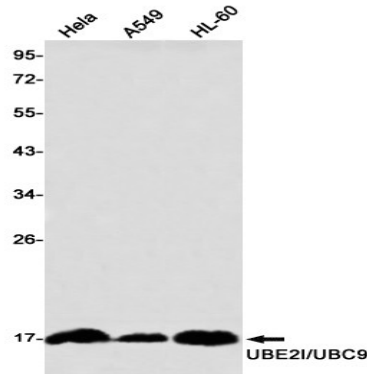
Immunocytochemistry analysis of SUMO Conjugating Enzyme UBC9 (green) in HeLa using SUMO Conjugating Enzyme UBC9 antibody, and DAPI (blue).



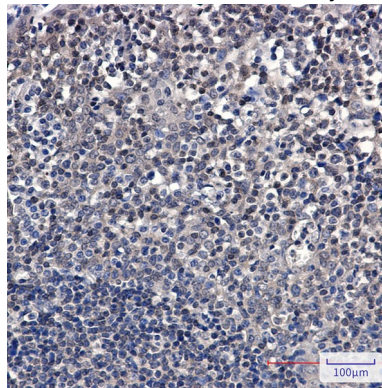
Western blot analysis of UBE2I/UBC9 in 3T3, PC-12, MEF lysates using UBE2I/UBC9 antibody.

**Product Name: SUMO Conjugating Enzyme UBC9 Rabbit  
Monoclonal Antibody**  
**Catalog #: AMRe03246**

---



Western blot analysis of UBE2I/UBC9 in HeLa, A549, HL-60 lysates using UBE2I/UBC9 antibody



Immunohistochemistry analysis of paraffin-embedded Human tonsil using UBE2I/UBC9 antibody. High-pressure and temperature Sodium Citrate pH 6.0 was used for antigen retrieval.

## Note

For research use only.