

Summary

Production Name	TPX2 Rabbit Monoclonal Antibody
Description	Recombinant Rabbit Monoclonal antibody
Host	Rabbit
Application	WB,ICC/IF
Reactivity	Human

Performance

Conjugation	Unconjugated
Modification	Unmodified
Isotype	IgG
Clonality	Monoclonal Antibody
Form	Liquid
Storage	Store at 4°C short term. Aliquot and store at -20°C long term. Avoid freeze/thaw cycles.
Buffer	50mM Tris-Glycine(pH 7.4), 0.15M NaCl, 40% Glycerol, 0.01% Sodium azide and 0.05% BSA
Purification	Affinity Purified

Immunogen

Gene Name	TPX2
Alternative Names	DIL2; p100; DIL-2; HCTP4; FLS353; HCA519; REPP86; C20orf1; C20orf2; GD:C20orf1
Gene ID	22974
SwissProt ID	Q9ULW0

Application

Dilution Ratio	WB: 1/500-1/1000 IF: 1/50-1/200
Molecular Weight	Calculated MW: 86 kDa; Observed MW: 100 kDa

Background

Product Name: TPX2 Rabbit Monoclonal Antibody
Catalog #: AMRe03237

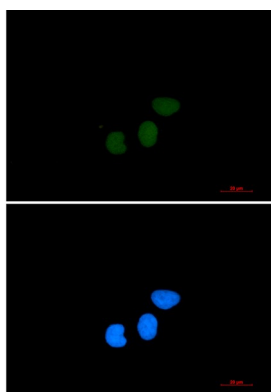


Spindle assembly factor. Required for normal assembly of mitotic spindles. Required for normal assembly of microtubules during apoptosis. Required for chromatin and/or kinetochore dependent microtubule nucleation. Mediates AURKA localization to spindle microtubules. Activates AURKA by promoting its autophosphorylation at 'Thr-288' and protects this residue against dephosphorylation.

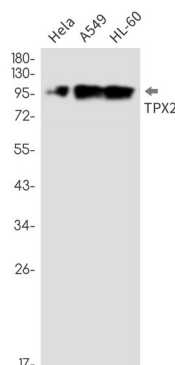
Research Area

Cell Biology

Image Data



Immunocytochemistry analysis of TPX2 (green) in HeLa using TPX2 antibody, and DAPI (blue).



Western blot analysis of TPX2 in HeLa, A549, HL-60 lysates using TPX2 antibody.

Note

For research use only.