

Summary

Production Name	Sortilin Rabbit Monoclonal Antibody
Description	Recombinant Rabbit Monoclonal antibody
Host	Rabbit
Application	WB,IHC-P
Reactivity	Human,Rat

Performance

Conjugation	Unconjugated
Modification	Unmodified
Isotype	IgG
Clonality	Monoclonal Antibody
Form	Liquid
Storage	Store at 4°C short term. Aliquot and store at -20°C long term. Avoid freeze/thaw cycles.
Buffer	50mM Tris-Glycine(pH 7.4), 0.15M NaCl, 40% Glycerol, 0.01% Sodium azide and 0.05% BSA
Purification	Affinity Purified

Immunogen

Gene Name	SORT1
Alternative Names	100 kDa NT receptor; Glycoprotein 95; Gp95; LDLCQ6; Neurotensin receptor 3; NT3; NTR3; SORT 1; Sortilin 1
Gene ID	6272
SwissProt ID	Q99523

Application

Dilution Ratio	WB: 1/500-1/1000 IHC: 1/50-1/100
Molecular Weight	Calculated MW: 92 kDa; Observed MW: 92 kDa

Product Name: Sortilin Rabbit Monoclonal Antibody
Catalog #: AMRe03209



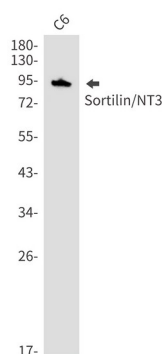
Background

Functions as a sorting receptor in the Golgi compartment and as a clearance receptor on the cell surface. Required for protein transport from the Golgi apparatus to the lysosomes by a pathway that is independent of the mannose-6-phosphate receptor (M6PR).

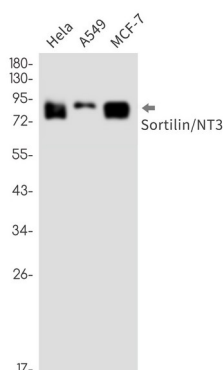
Research Area

Neuroscience

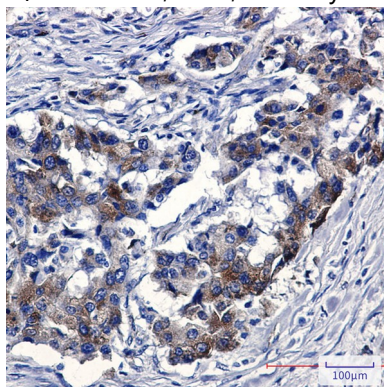
Image Data



Western blot analysis of Sortilin/NT3 in C6 lysates using Sortilin antibody.



Western blot analysis of Sortilin/NT3 in HeLa, A549, MCF-7 lysates using Sortilin/NT3 antibody.



Product Name: Sortilin Rabbit Monoclonal Antibody
Catalog #: AMRe03209



Immunohistochemistry analysis of paraffin-embedded Human lung cancer using Sortilin/NT3 antibody. High-pressure and temperature Sodium Citrate pH 6.0 was used for antigen retrieval.

Note

For research use only.