

Summary

Production Name	SPI1 Rabbit Monoclonal Antibody
Description	Recombinant Rabbit Monoclonal antibody
Host	Rabbit
Application	WB,IHC-F,IHC-P,ICC/IF,IP
Reactivity	Human,Mouse,Hamster,Rat

Performance

Conjugation	Unconjugated
Modification	Unmodified
Isotype	IgG
Clonality	Monoclonal Antibody
Form	Liquid
Storage	Store at 4°C short term. Aliquot and store at -20°C long term. Avoid freeze/thaw cycles.
Buffer	50mM Tris-Glycine(pH 7.4), 0.15M NaCl, 40% Glycerol, 0.01% Sodium azide and 0.05% BSA
Purification	Affinity Purified

Immunogen

Gene Name	Spi1
Alternative Names	Dis1; PU.1; Dis-1; Sfpi1; Spi-1; Sfpi-1; Tcfpu1; Tfpu.1
Gene ID	20375.0
SwissProt ID	P17433

Application

Dilution Ratio	WB: 1/500-1/1000 IHC: 1/50-1/100 IF: 1/50-1/200 IP: 1/20
Molecular Weight	Calculated MW: 31 kDa; Observed MW: 31 kDa

Background

Product Name: SPI1 Rabbit Monoclonal Antibody
Catalog #: AMRe03170

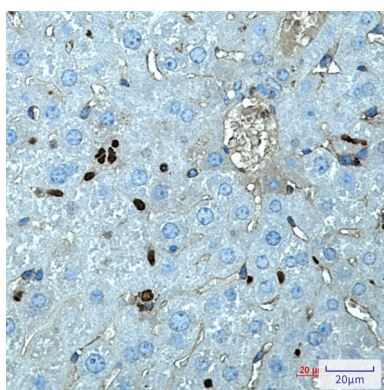


Binds to the PU-box, a purine-rich DNA sequence (5'-GAGGAA-3') that can act as a lymphoid-specific enhancer. This protein is a transcriptional activator that may be specifically involved in the differentiation or activation of macrophages or B-cells. Also binds RNA and may modulate pre-mRNA splicing.

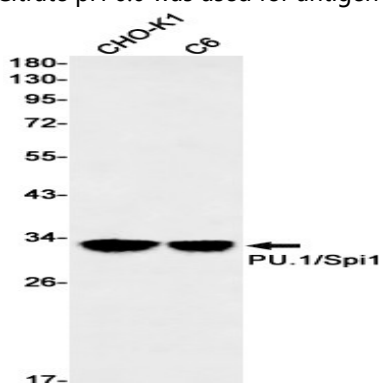
Research Area

Immunology

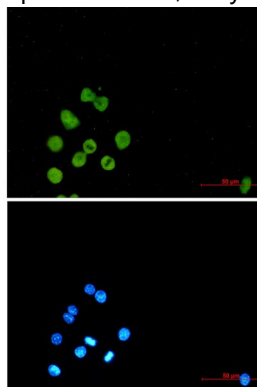
Image Data



Immunohistochemistry analysis of paraffin-embedded mouse liver using SPI1 antibody. High-pressure and temperature Sodium Citrate pH 6.0 was used for antigen retrieval.



Western blot analysis of PU.1/Spi1 in CHO-K1, C6 lysates using PU.1/Spi1 antibody.



Product Name: SPI1 Rabbit Monoclonal Antibody
Catalog #: AMRe03170



Immunocytochemistry analysis of PU.1/Spi1 (green) in Raw264.7 using PU.1/Spi1 antibody, and DAPI (blue)

Note

For research use only.