

**Product Name: PEN2 Rabbit Monoclonal Antibody**  
**Catalog #: AMRe03142**



## Summary

<b>Production Name</b>	PEN2 Rabbit Monoclonal Antibody
<b>Description</b>	Recombinant Rabbit Monoclonal antibody
<b>Host</b>	Rabbit
<b>Application</b>	WB,IHC-F,IHC-P,ICC/IF
<b>Reactivity</b>	Human,Mouse,Rat

## Performance

<b>Conjugation</b>	Unconjugated
<b>Modification</b>	Unmodified
<b>Isotype</b>	IgG
<b>Clonality</b>	Monoclonal Antibody
<b>Form</b>	Liquid
<b>Storage</b>	Store at 4°C short term. Aliquot and store at -20°C long term. Avoid freeze/thaw cycles.
<b>Buffer</b>	50mM Tris-Glycine(pH 7.4), 0.15M NaCl, 40% Glycerol, 0.01% Sodium azide and 0.05% BSA
<b>Purification</b>	Affinity Purified

## Immunogen

<b>Gene Name</b>	PSENEN
<b>Alternative Names</b>	PEN 2; PSEN2; psenen
<b>Gene ID</b>	55851
<b>SwissProt ID</b>	Q9NZ42

## Application

<b>Dilution Ratio</b>	WB: 1/500-1/1000 IHC: 1/50-1/100 IF: 1/50-1/200
<b>Molecular Weight</b>	Calculated MW: 12 kDa; Observed MW: 12 kDa

## Background

**Product Name: PEN2 Rabbit Monoclonal Antibody**  
**Catalog #: AMRe03142**

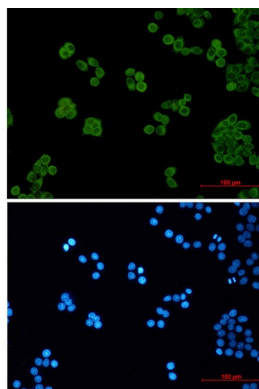


Essential subunit of the gamma-secretase complex, an endoprotease complex that catalyzes the intramembrane cleavage of integral membrane proteins such as Notch receptors and APP (beta-amyloid precursor protein).

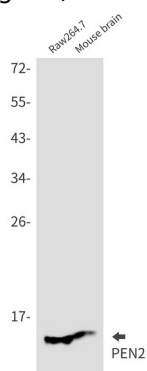
## Research Area

Neuroscience

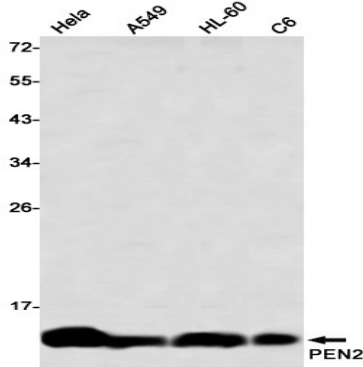
## Image Data



Immunocytochemistry analysis of PEN2 (green) in Hela using PEN2 antibody, and DAPI (blue).



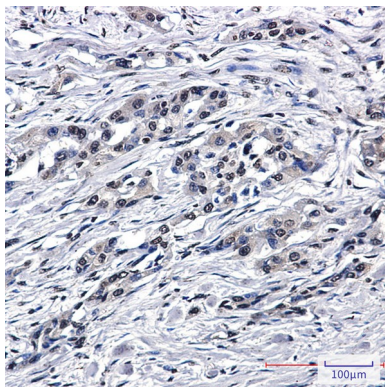
Western blot analysis of PEN2 in Raw264.7, mouse brain lysates using PEN2 antibody.



Western blot analysis of PEN2 in Hela, A549, HL-60, C6 lysates using PEN2 antibody

**Product Name: PEN2 Rabbit Monoclonal Antibody**  
**Catalog #: AMRe03142**

---



Immunohistochemistry analysis of paraffin-embedded Human lung cancer using PEN2 antibody. High-pressure and temperature Sodium Citrate pH 6.0 was used for antigen retrieval.

**Note**

For research use only.