

Product Name: Niemann Pick C2 Rabbit Monoclonal Antibody
Catalog #: AMRe03112



Summary

Production Name	Niemann Pick C2 Rabbit Monoclonal Antibody
Description	Recombinant Rabbit Monoclonal antibody
Host	Rabbit
Application	WB,IHC-F,IHC-P,ICC/IF
Reactivity	Human,Mouse,Rat

Performance

Conjugation	Unconjugated
Modification	Unmodified
Isotype	IgG
Clonality	Monoclonal Antibody
Form	Liquid
Storage	Store at 4°C short term. Aliquot and store at -20°C long term. Avoid freeze/thaw cycles.
Buffer	50mM Tris-Glycine(pH 7.4), 0.15M NaCl, 40% Glycerol, 0.01% Sodium azide and 0.05% BSA
Purification	Affinity Purified

Immunogen

Gene Name	NPC2
Alternative Names	HE1; EDDM1
Gene ID	10577
SwissProt ID	P61916

Application

Dilution Ratio	WB: 1/500-1/1000 IHC: 1/50-1/100 IF: 1/50-1/200
Molecular Weight	Calculated MW: 17 kDa; Observed MW: 17 kDa

Product Name: Niemann Pick C2 Rabbit Monoclonal Antibody
Catalog #: AMRe03112



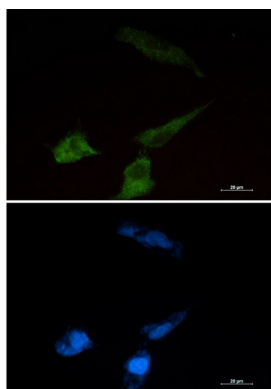
Background

This gene encodes a protein containing a lipid recognition domain. The encoded protein may function in regulating the transport of cholesterol through the late endosomal/lysosomal system. Mutations in this gene have been associated with Niemann-Pick disease, type C2 and frontal lobe atrophy. [provided by RefSeq, Jul 2008]

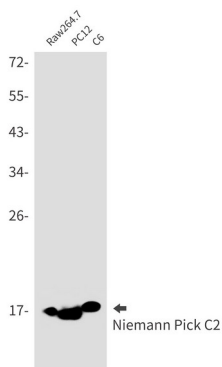
Research Area

Cardiovascular

Image Data

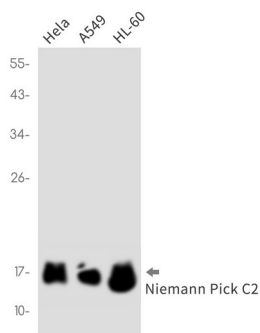


Immunocytochemistry analysis of Niemann Pick C2 (green) in U87-MG using Niemann Pick C2 antibody, and DAPI (blue).

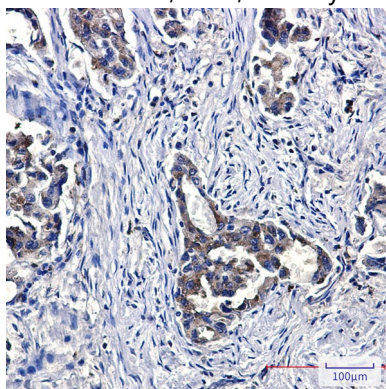


Western blot analysis of Niemann Pick C2 in Raw264.7, PC-12, C6 lysates using Niemann Pick C2 antibody.

Product Name: Niemann Pick C2 Rabbit Monoclonal Antibody
Catalog #: AMRe03112



Western blot analysis of Niemann Pick C2 in HeLa, A549, HL-60 lysates using Niemann Pick C2 antibody



Immunohistochemistry analysis of paraffin-embedded Human lung cancer using Niemann Pick C2 antibody. High-pressure and temperature Sodium Citrate pH 6.0 was used for antigen retrieval.

Note

For research use only.