

**Product Name: LC3A Rabbit Monoclonal Antibody**  
**Catalog #: AMRe03075**



## Summary

<b>Production Name</b>	LC3A Rabbit Monoclonal Antibody
<b>Description</b>	Recombinant Rabbit Monoclonal antibody
<b>Host</b>	Rabbit
<b>Application</b>	WB,IP
<b>Reactivity</b>	Human,Mouse,Rat

## Performance

<b>Conjugation</b>	Unconjugated
<b>Modification</b>	Unmodified
<b>Isotype</b>	IgG
<b>Clonality</b>	Monoclonal Antibody
<b>Form</b>	Liquid
<b>Storage</b>	Store at 4°C short term. Aliquot and store at -20°C long term. Avoid freeze/thaw cycles.
<b>Buffer</b>	50mM Tris-Glycine(pH 7.4), 0.15M NaCl, 40% Glycerol, 0.01% Sodium azide and 0.05% BSA
<b>Purification</b>	Affinity Purified

## Immunogen

<b>Gene Name</b>	MAP1LC3A Microtubule-associated proteins 1A/1B light chain 3A; Autophagy-related protein LC3 A; Autophagy-related ubiquitin-like modifier LC3 A; MAP1 light chain 3-like protein 1; MAP1A/MAP1B light chain 3 A; MAP1A/MAP1B LC3 A; Microtubule-associated protein 1 light chain 3 alpha
<b>Alternative Names</b>	
<b>Gene ID</b>	84557
<b>SwissProt ID</b>	Q9H492

## Application

<b>Dilution Ratio</b>	WB: 1/500-1/1000 IP: 1/20
<b>Molecular Weight</b>	Calculated MW: 14 kDa; Observed MW: 14,16 kDa

**Product Name: LC3A Rabbit Monoclonal Antibody**  
**Catalog #: AMRe03075**



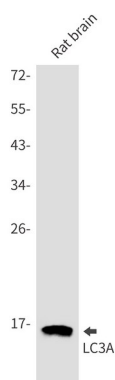
## Background

Autophagy marker Light Chain 3 (LC3) was originally identified as a subunit of microtubule-associated proteins 1A and 1B (termed MAP1LC3), and subsequently found to contain similarity to the yeast protein Apg8/Aut7/Cvt5 critical for autophagy. Three human LC3 isoforms (LC3A, LC3B, and LC3C) undergo post-translational modifications during autophagy. Cleavage of LC3 at the carboxy terminus immediately following synthesis yields the cytosolic LC3-I form.

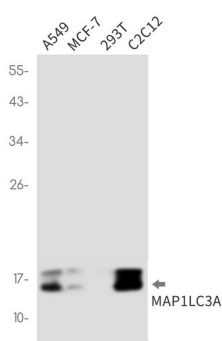
## Research Area

Signal Transduction

## Image Data



Western blot analysis of LC3A in rat brain lysates using LC3A antibody.



Western blot analysis of LC3A in A549, MCF-7, 293T, C2C12 lysates using LC3A antibody.

## Note

For research use only.