

Summary

Production Name	IMPDH2 Rabbit Monoclonal Antibody
Description	Recombinant Rabbit Monoclonal antibody
Host	Rabbit
Application	WB,IHC-F,IHC-P,ICC/IF,IP
Reactivity	Human,Mouse,Rat

Performance

Conjugation	Unconjugated
Modification	Unmodified
Isotype	IgG
Clonality	Monoclonal Antibody
Form	Liquid
Storage	Store at 4°C short term. Aliquot and store at -20°C long term. Avoid freeze/thaw cycles.
Buffer	50mM Tris-Glycine(pH 7.4), 0.15M NaCl, 40% Glycerol, 0.01% Sodium azide and 0.05% BSA
Purification	Affinity Purified

Immunogen

Gene Name	IMPDH2
Alternative Names	IMPD2; IMPDH 2; IMPDH II; Impdh2
Gene ID	3615
SwissProt ID	P12268

Application

Dilution Ratio	WB: 1/500-1/1000 IHC: 1/50-1/100 IF: 1/50-1/200 IP: 1/20
Molecular Weight	Calculated MW: 56 kDa; Observed MW: 56 kDa

Background

Product Name: IMPDH2 Rabbit Monoclonal Antibody
Catalog #: AMRe03048

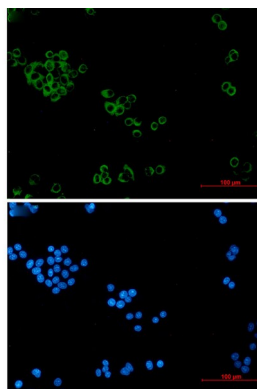


Rate limiting enzyme in the de novo synthesis of guanine nucleotides and therefore is involved in the regulation of cell growth. It may also have a role in the development of malignancy and the growth progression of some tumors.

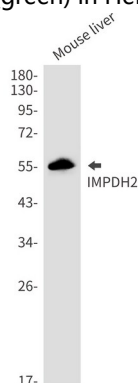
Research Area

Signal Transduction

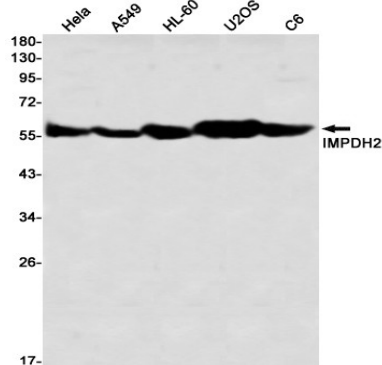
Image Data



Immunocytochemistry analysis of IMPDH2 (green) in HeLa using IMPDH2 antibody, and DAPI (blue).

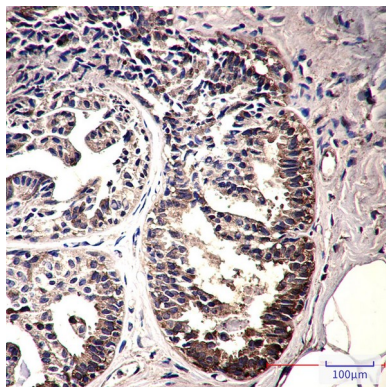


Western blot analysis of IMPDH2 in 3T3, mouse liver lysates using IMPDH2 antibody.



Western blot analysis of IMPDH2 in HeLa, A549, HL-60, U2OS, C6 lysates using IMPDH2 antibody

Product Name: IMPDH2 Rabbit Monoclonal Antibody
Catalog #: AMRe03048



Immunohistochemistry analysis of paraffin-embedded Human breast cancer using IMPDH2 antibody. High-pressure and temperature Sodium Citrate pH 6.0 was used for antigen retrieval.

Note

For research use only.