

Product Name: IGF1 Receptor Rabbit Monoclonal Antibody
Catalog #: AMRe03042

Summary

Production Name	IGF1 Receptor Rabbit Monoclonal Antibody
Description	Recombinant Rabbit Monoclonal antibody
Host	Rabbit
Application	WB,IHC-P
Reactivity	Human

Performance

Conjugation	Unconjugated
Modification	Unmodified
Isotype	IgG
Clonality	Monoclonal Antibody
Form	Liquid
Storage	Store at 4°C short term. Aliquot and store at -20°C long term. Avoid freeze/thaw cycles.
Buffer	50mM Tris-Glycine(pH 7.4), 0.15M NaCl, 40% Glycerol, 0.01% Sodium azide and 0.05% BSA
Purification	Affinity Purified

Immunogen

Gene Name	IGF1R
Alternative Names	IGF1R; Insulin-like growth factor 1 receptor; Insulin-like growth factor I receptor; IGF-I receptor; CD antigen CD221
Gene ID	3480
SwissProt ID	P08069

Application

Dilution Ratio	WB: 1/500-1/1000 IHC: 1/50-1/100
Molecular Weight	Calculated MW: 155 kDa; Observed MW: 95 kDa

Product Name: IGF1 Receptor Rabbit Monoclonal Antibody
Catalog #: AMRe03042



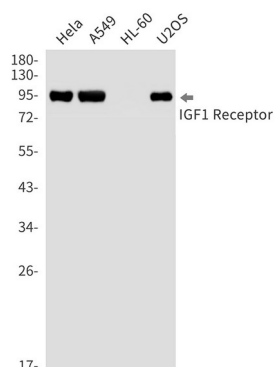
Background

This receptor binds insulin-like growth factor with a high affinity. It has tyrosine kinase activity. The insulin-like growth factor I receptor plays a critical role in transformation events. Cleavage of the precursor generates alpha and beta subunits. It is highly overexpressed in most malignant tissues where it functions as an anti-apoptotic agent by enhancing cell survival. Alternatively spliced transcript variants encoding distinct isoforms have been found for this gene. [provided by RefSeq, May 2014]

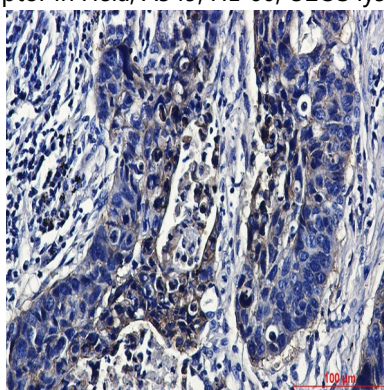
Research Area

Signal Transduction

Image Data



Western blot analysis of IGF1 Receptor in Hela, A549, HL-60, U2OS lysates using IGF1 Receptor antibody.



Immunohistochemistry analysis of Human lung cancer using IGF1 Receptor antibody. High-pressure and temperature Sodium Citrate pH 6.0 was used for antigen retrieval.

Note

For research use only.

**Product Name: IGF1 Receptor Rabbit Monoclonal
Antibody**
Catalog #: AMRe03042

