
Summary

Production Name	HCE Rabbit Monoclonal Antibody
Description	Recombinant Rabbit Monoclonal antibody
Host	Rabbit
Application	WB,ICC/IF,IP
Reactivity	Human,Rat

Performance

Conjugation	Unconjugated
Modification	Unmodified
Isotype	IgG
Clonality	Monoclonal Antibody
Form	Liquid
Storage	Store at 4°C short term. Aliquot and store at -20°C long term. Avoid freeze/thaw cycles.
Buffer	50mM Tris-Glycine(pH 7.4), 0.15M NaCl, 40% Glycerol, 0.01% Sodium azide and 0.05% BSA
Purification	Affinity Purified

Immunogen

Gene Name	RNGTT
Alternative Names	HCE; HCE1; hCAP; CAP1A
Gene ID	8732
SwissProt ID	O60942

Application

Dilution Ratio	WB: 1/500-1/1000 IF: 1/50-1/200 IP: 1/20
Molecular Weight	Calculated MW: 69 kDa; Observed MW: 69 kDa

Background

Product Name: HCE Rabbit Monoclonal Antibody
Catalog #: AMRe03018

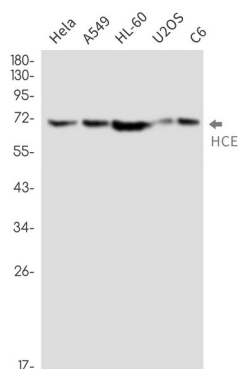


Bifunctional mRNA-capping enzyme exhibiting RNA 5'-triphosphatase activity in the N-terminal part and mRNA guanylyltransferase activity in the C-terminal part. Catalyzes the first two steps of cap formation: by removing the gamma-phosphate from the 5'-triphosphate end of nascent mRNA to yield a diphosphate end, and by transferring the gmp moiety of GTP to the 5'-diphosphate terminus.

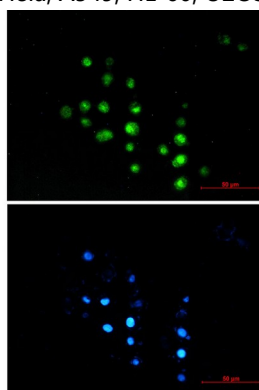
Research Area

Epigenetics and Nuclear Signaling

Image Data



Western blot analysis of HCE in HeLa, A549, HL-60, U2OS, C6 lysates using HCE antibody.



Immunocytochemistry analysis of HCE (green) in MCF-7 using HCE antibody, and DAPI (blue)

Note

For research use only.