

**Product Name: FGFR1 Oncogene Partner Rabbit
Monoclonal Antibody
Catalog #: AMRe02997**

Summary

Production Name	FGFR1 Oncogene Partner Rabbit Monoclonal Antibody
Description	Recombinant Rabbit Monoclonal antibody
Host	Rabbit
Application	WB,ICC/IF,IP
Reactivity	Human,Mouse,Rat

Performance

Conjugation	Unconjugated
Modification	Unmodified
Isotype	IgG
Clonality	Monoclonal Antibody
Form	Liquid
Storage	Store at 4°C short term. Aliquot and store at -20°C long term. Avoid freeze/thaw cycles.
Buffer	50mM Tris-Glycine(pH 7.4), 0.15M NaCl, 40% Glycerol, 0.01% Sodium azide and 0.05% BSA
Purification	Affinity Purified

Immunogen

Gene Name	CEP43
Alternative Names	FOP; FGFR1OP
Gene ID	11116
SwissProt ID	O95684

Application

Dilution Ratio	WB: 1/500-1/1000 IF: 1/50-1/200 IP: 1/20
Molecular Weight	Calculated MW: 43 kDa; Observed MW: 43 kDa

Product Name: FGFR1 Oncogene Partner Rabbit Monoclonal Antibody
Catalog #: AMRe02997

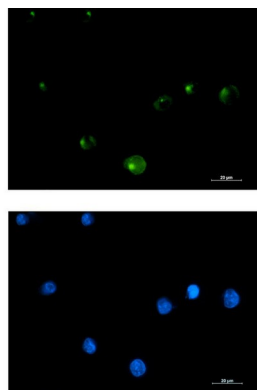
Background

Required for anchoring microtubules to the centrosomes.

Research Area

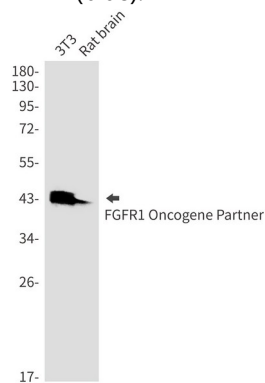
-

Image Data

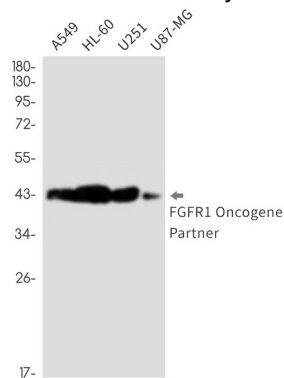


Immunocytochemistry analysis of FGFR1 Oncogene Partner (green) in K562 using FGFR1 Oncogene Partner antibody, and

DAPI(blue).



Western blot analysis of FGFR1 Oncogene Partner in 3T3, rat brain lysates using FGFR1 Oncogene Partner antibody.





**Product Name: FGFR1 Oncogene Partner Rabbit
Monoclonal Antibody
Catalog #: AMRe02997**

Western blot analysis of FGFR1 Oncogene Partner in A549, HL-60, U251, U87-MG lysates using FGFR1 Oncogene Partner antibody

Note

For research use only.