

**Product Name: FE65 Rabbit Monoclonal Antibody**  
**Catalog #: AMRe02996**



## Summary

<b>Production Name</b>	FE65 Rabbit Monoclonal Antibody
<b>Description</b>	Recombinant Rabbit Monoclonal antibody
<b>Host</b>	Rabbit
<b>Application</b>	WB,IHC-F,IHC-P,ICC/IF
<b>Reactivity</b>	Human

## Performance

<b>Conjugation</b>	Unconjugated
<b>Modification</b>	Unmodified
<b>Isotype</b>	IgG
<b>Clonality</b>	Monoclonal Antibody
<b>Form</b>	Liquid
<b>Storage</b>	Store at 4°C short term. Aliquot and store at -20°C long term. Avoid freeze/thaw cycles.
<b>Buffer</b>	50mM Tris-Glycine(pH 7.4), 0.15M NaCl, 40% Glycerol, 0.01% Sodium azide and 0.05% BSA
<b>Purification</b>	Affinity Purified

## Immunogen

<b>Gene Name</b>	APBB1
<b>Alternative Names</b>	APBB1; Protein Fe65; RIR
<b>Gene ID</b>	322
<b>SwissProt ID</b>	O00213

## Application

<b>Dilution Ratio</b>	WB: 1/500-1/1000 IHC: 1/50-1/100 IF: 1/50-1/200
<b>Molecular Weight</b>	Calculated MW: 77 kDa; Observed MW: 100 kDa

## Background

**Product Name: FE65 Rabbit Monoclonal Antibody**  
**Catalog #: AMRe02996**

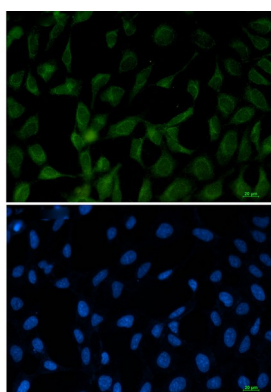


Transcription coregulator that can have both coactivator and corepressor functions. Adapter protein that forms a transcriptionally active complex with the gamma-secretase-derived amyloid precursor protein (APP) intracellular domain. Plays a central role in the response to DNA damage by translocating to the nucleus and inducing apoptosis.

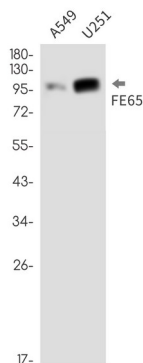
## Research Area

Neuroscience

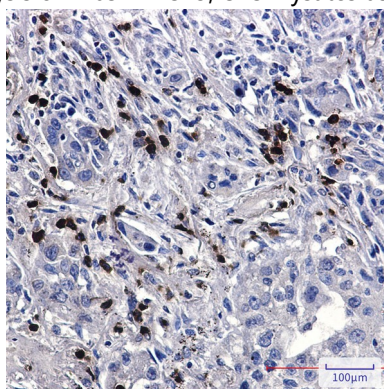
## Image Data



Immunocytochemistry analysis of FE65 (green) in 293T using FE65 antibody, and DAPI (blue).



Western blot analysis of FE65 in A549, U251 lysates using FE65 antibody.



Immunohistochemistry analysis of paraffin-embedded Human lung cancer tissue using FE65 antibody. High-pressure and

**Product Name: FE65 Rabbit Monoclonal Antibody**  
**Catalog #: AMRe02996**

---



temperature Sodium Citrate pH 6.0 was used for antigen retrieval.

**Note**

For research use only.