

Product Name: DDB1 Rabbit Monoclonal Antibody
Catalog #: AMRe02967



Summary

Production Name	DDB1 Rabbit Monoclonal Antibody
Description	Recombinant Rabbit Monoclonal antibody
Host	Rabbit
Application	WB,IHC-F,IHC-P,ICC/IF,IP
Reactivity	Human,Mouse

Performance

Conjugation	Unconjugated
Modification	Unmodified
Isotype	IgG
Clonality	Monoclonal Antibody
Form	Liquid
Storage	Store at 4°C short term. Aliquot and store at -20°C long term. Avoid freeze/thaw cycles.
Buffer	50mM Tris-Glycine(pH 7.4), 0.15M NaCl, 40% Glycerol, 0.01% Sodium azide and 0.05% BSA
Purification	Affinity Purified

Immunogen

Gene Name	DDB1
Alternative Names	XPE; DDBA; XAP1; XPCE; XPE-BF; UV-DDB1
Gene ID	1642
SwissProt ID	Q16531

Application

Dilution Ratio	WB: 1/500-1/1000 IHC: 1/50-1/100 IF: 1/50-1/200 IP: 1/20
Molecular Weight	Calculated MW: 127 kDa; Observed MW: 127 kDa

Background

Product Name: DDB1 Rabbit Monoclonal Antibody
Catalog #: AMRe02967

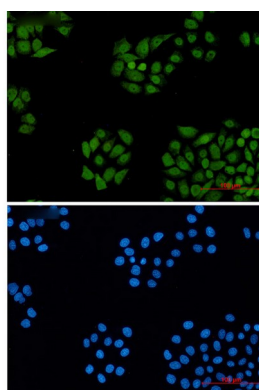


Required for DNA repair. Binds to DDB2 to form the UV-damaged DNA-binding protein complex (the UV-DDB complex). The UV-DDB complex may recognize UV-induced DNA damage and recruit proteins of the nucleotide excision repair pathway (the NER pathway) to initiate DNA repair.

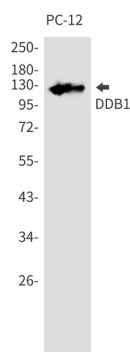
Research Area

Epigenetics and Nuclear Signaling

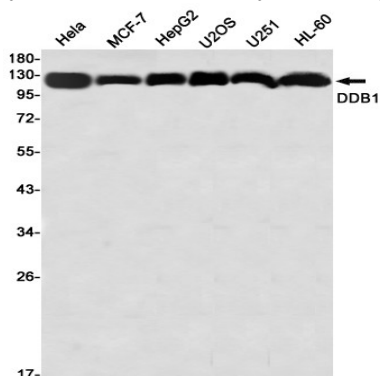
Image Data



Immunocytochemistry analysis of DDB1 (green) in HeLa using DDB1 antibody, and DAPI (blue).

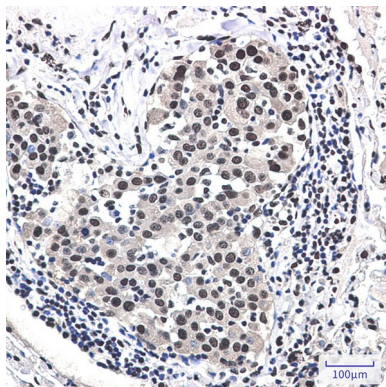


Western blot analysis of DDB1 in PC-12 lysates using DDB1 antibody.



Western blot analysis of DDB1 in HeLa, MCF-7, HepG2, U2OS, U251, HL-60 lysates using DDB1 antibody

Product Name: DDB1 Rabbit Monoclonal Antibody
Catalog #: AMRe02967



Immunohistochemistry analysis of paraffin-embedded Human lung cancer using DDB1 antibody. High-pressure and temperature Sodium Citrate pH 6.0 was used for antigen retrieval.

Note

For research use only.