
Summary

Production Name	CLPX Rabbit Monoclonal Antibody
Description	Recombinant Rabbit Monoclonal antibody
Host	Rabbit
Application	WB,ICC/IF
Reactivity	Human,Mouse,Rat,Hamster

Performance

Conjugation	Unconjugated
Modification	Unmodified
Isotype	IgG
Clonality	Monoclonal Antibody
Form	Liquid
Storage	Store at 4°C short term. Aliquot and store at -20°C long term. Avoid freeze/thaw cycles.
Buffer	50mM Tris-Glycine(pH 7.4), 0.15M NaCl, 40% Glycerol, 0.01% Sodium azide and 0.05% BSA
Purification	Affinity Purified

Immunogen

Gene Name	CLPX
Alternative Names	ATP-dependent Clp protease ATP-binding subunit clpX-like; mitochondrial; CLPX
Gene ID	10845
SwissProt ID	O76031

Application

Dilution Ratio	WB: 1/500-1/1000 IF: 1/50-1/200
Molecular Weight	Calculated MW: 69 kDa; Observed MW: 69 kDa

Background

Product Name: CLPX Rabbit Monoclonal Antibody
Catalog #: AMRe02948

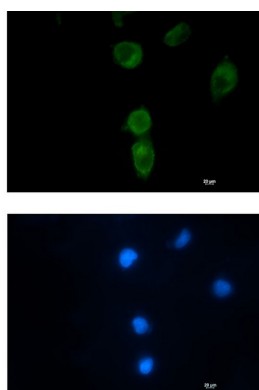


ATP-dependent specificity component of the Clp protease complex.

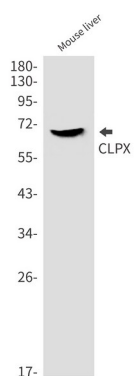
Research Area

-

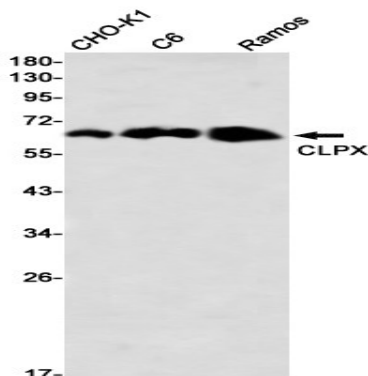
Image Data



Immunocytochemistry analysis of CLPX (green) in HT-1080 using CLPX antibody, and DAPI (blue).



Western blot analysis of CLPX in mouse liver lysates using CLPX antibody.



Western blot analysis of CLPX in CHO-K1, C6, Ramos lysates using CLPX antibody

Product Name: CLPX Rabbit Monoclonal Antibody
Catalog #: AMRe02948



Note

For research use only.