

Product Name: CDC34 Rabbit Monoclonal Antibody
Catalog #: AMRe02936



Summary

Production Name	CDC34 Rabbit Monoclonal Antibody
Description	Recombinant Rabbit Monoclonal antibody
Host	Rabbit
Application	WB,IP
Reactivity	Human,Mouse,Rat

Performance

Conjugation	Unconjugated
Modification	Unmodified
Isotype	IgG
Clonality	Monoclonal Antibody
Form	Liquid
Storage	Store at 4°C short term. Aliquot and store at -20°C long term. Avoid freeze/thaw cycles.
Buffer	50mM Tris-Glycine(pH 7.4), 0.15M NaCl, 40% Glycerol, 0.01% Sodium azide and 0.05% BSA
Purification	Affinity Purified

Immunogen

Gene Name	CDC34 CDC34; UBCH3; UBE2R1; Ubiquitin-conjugating enzyme E2 R1; Ubiquitin-conjugating enzyme E2-32 kDa complementing; Ubiquitin-conjugating enzyme E2-CDC34; Ubiquitin-protein ligase R1
Alternative Names	
Gene ID	997
SwissProt ID	P49427

Application

Dilution Ratio	WB: 1/500-1/1000 IP: 1/20
Molecular Weight	Calculated MW: 27 kDa; Observed MW: 32 kDa

Product Name: CDC34 Rabbit Monoclonal Antibody
Catalog #: AMRe02936



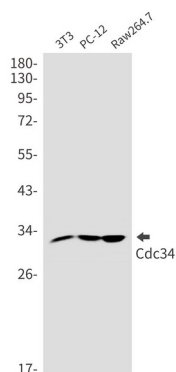
Background

Involved in ubiquitin conjugation and degradation of CREM isoform ICERIIgamma and ATF15 resulting in abrogation of ICERIIgamma- and ATF5-mediated repression of cAMP-induced transcription during both meiotic and mitotic cell cycles. Involved in the regulation of the cell cycle G2/M phase through its targeting of the WEE1 kinase for ubiquitination and degradation.

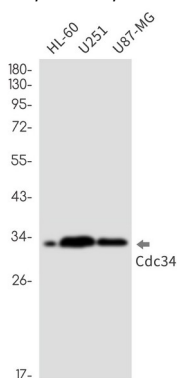
Research Area

Epigenetics and Nuclear Signaling

Image Data



Western blot analysis of Cdc34 in 3T3, PC-12, Raw264.7 lysates using CDC34 antibody.



Western blot analysis of Cdc34 in HL-60, U251, U87-MG lysates using Cdc34 antibody.

Note

For research use only.