

**Product Name: BUBR1 Rabbit Monoclonal Antibody**  
**Catalog #: AMRe02918**



## Summary

<b>Production Name</b>	BUBR1 Rabbit Monoclonal Antibody
<b>Description</b>	Recombinant Rabbit Monoclonal antibody
<b>Host</b>	Rabbit
<b>Application</b>	WB, ICC/IF, IP
<b>Reactivity</b>	Human

## Performance

<b>Conjugation</b>	Unconjugated
<b>Modification</b>	Unmodified
<b>Isotype</b>	IgG
<b>Clonality</b>	Monoclonal Antibody
<b>Form</b>	Liquid
<b>Storage</b>	Store at 4°C short term. Aliquot and store at -20°C long term. Avoid freeze/thaw cycles.
<b>Buffer</b>	50mM Tris-Glycine(pH 7.4), 0.15M NaCl, 40% Glycerol, 0.01% Sodium azide and 0.05% BSA
<b>Purification</b>	Affinity Purified

## Immunogen

<b>Gene Name</b>	BUB1B BUB1B; BUBR1; MAD3L; SSK1; Mitotic checkpoint serine/threonine-protein kinase
<b>Alternative Names</b>	BUB1 beta; MAD3/BUB1-related protein kinase; hBUBR1; Mitotic checkpoint kinase MAD3L; Protein SSK1
<b>Gene ID</b>	701
<b>SwissProt ID</b>	O60566

## Application

<b>Dilution Ratio</b>	WB: 1/500-1/1000 IF: 1/50-1/200 IP: 1/20
<b>Molecular Weight</b>	Calculated MW: 120 kDa; Observed MW: 120 kDa

**Product Name: BUBR1 Rabbit Monoclonal Antibody**  
**Catalog #: AMRe02918**



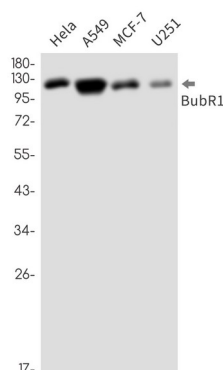
## Background

Essential component of the mitotic checkpoint. Required for normal mitosis progression. The mitotic checkpoint delays anaphase until all chromosomes are properly attached to the mitotic spindle. One of its checkpoint functions is to inhibit the activity of the anaphase-promoting complex/cyclosome (APC/C) by blocking the binding of CDC20 to APC/C, independently of its kinase activity. The other is to monitor kinetochore activities that depend on the kinetochore motor CENPE. Required for kinetochore localization of CENPE.

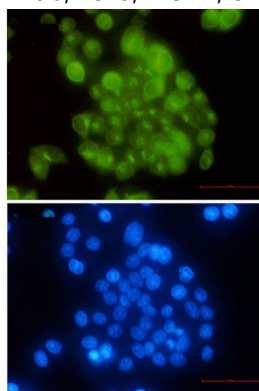
## Research Area

Cell Biology

## Image Data



Western blot analysis of BubR1 in HeLa, A549, MCF-7, U251 lysates using BUBR1 antibody.



Immunocytochemistry analysis of BubR1 (green) in HeLa using BubR1 antibody, and DAPI (blue)

## Note

For research use only.