

**Product Name: Phospho-Rad17 (Ser656) Rabbit
Monoclonal Antibody
Catalog #: AMRe02870**

Summary

Production Name	Phospho-Rad17 (Ser656) Rabbit Monoclonal Antibody
Description	Recombinant Rabbit Monoclonal antibody
Host	Rabbit
Application	WB,IHC-F,IHC-P,ICC/IF
Reactivity	Human

Performance

Conjugation	Unconjugated
Modification	Phosphorylated
Isotype	IgG
Clonality	Monoclonal Antibody
Form	Liquid
Storage	Store at 4°C short term. Aliquot and store at -20°C long term. Avoid freeze/thaw cycles.
Buffer	50mM Tris-Glycine(pH 7.4), 0.15M NaCl, 40% Glycerol, 0.01% Sodium azide and 0.05% BSA
Purification	Affinity Purified

Immunogen

Gene Name	RAD17
Alternative Names	RAD17; R24L; Cell cycle checkpoint protein RAD17; hRad17; RF-C/activator 1 homolog
Gene ID	5884
SwissProt ID	O75943

Application

Dilution Ratio	WB: 1/500-1/1000 IHC: 1/50-1/100 IF: 1/50-1/200
Molecular Weight	Calculated MW: 77 kDa; Observed MW: 80 kDa

**Product Name: Phospho-Rad17 (Ser656) Rabbit
Monoclonal Antibody
Catalog #: AMRe02870**



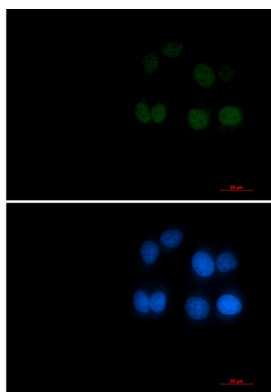
Background

Essential for sustained cell growth, maintenance of chromosomal stability, and ATR-dependent checkpoint activation upon DNA damage.

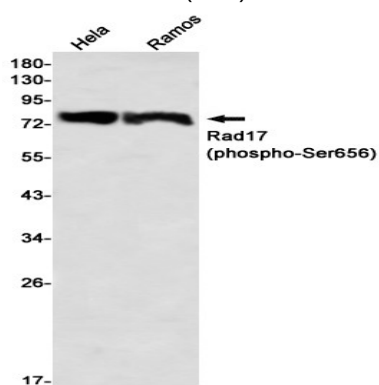
Research Area

Cell Biology

Image Data

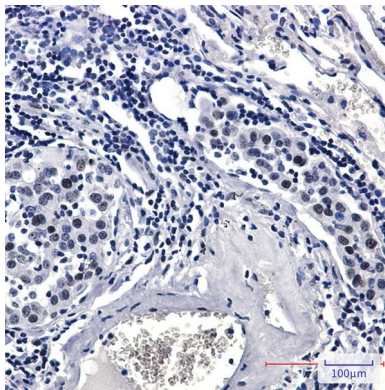


Immunocytochemistry analysis of Phospho-Rad17 (Ser656) (green) in HeLa using Phospho-Rad17 (Ser656) antibody, and DAPI(blue).



Western blot analysis of Rad17 (Phospho-Ser656) in HeLa, Ramos lysates using Rad17 (Phospho-Ser656) antibody.

**Product Name: Phospho-Rad17 (Ser656) Rabbit
Monoclonal Antibody
Catalog #: AMRe02870**



Immunohistochemistry analysis of paraffin-embedded Human lung cancer tissue using Rad17 (Phospho-Ser656) antibody.
High-pressure and temperature Sodium Citrate pH 6.0 was used for antigen retrieval.

Note

For research use only.