

**Product Name: Phospho-IRE1 (Ser724) Rabbit  
Monoclonal Antibody**  
**Catalog #: AMRe02857**

---

## Summary

<b>Production Name</b>	Phospho-IRE1 (Ser724) Rabbit Monoclonal Antibody
<b>Description</b>	Recombinant Rabbit Monoclonal antibody
<b>Host</b>	Rabbit
<b>Application</b>	WB,IP
<b>Reactivity</b>	Human

## Performance

<b>Conjugation</b>	Unconjugated
<b>Modification</b>	Phosphorylated
<b>Isotype</b>	IgG
<b>Clonality</b>	Monoclonal Antibody
<b>Form</b>	Liquid
<b>Storage</b>	Store at 4°C short term. Aliquot and store at -20°C long term. Avoid freeze/thaw cycles.
<b>Buffer</b>	50mM Tris-Glycine(pH 7.4), 0.15M NaCl, 40% Glycerol, 0.01% Sodium azide and 0.05% BSA
<b>Purification</b>	Affinity Purified

## Immunogen

<b>Gene Name</b>	ERN1
<b>Alternative Names</b>	ERN1; IRE1; Serine/threonine-protein kinase/endoribonuclease IRE1; Endoplasmic reticulum-to-nucleus signaling 1; Inositol-requiring protein 1; hIRE1p; Ire1-alpha; IRE1a
<b>Gene ID</b>	2081
<b>SwissProt ID</b>	O75460

## Application

<b>Dilution Ratio</b>	WB: 1/500-1/1000 IP: 1/20
<b>Molecular Weight</b>	Calculated MW: 110 kDa; Observed MW: 110 kDa

**Product Name: Phospho-IRE1 (Ser724) Rabbit  
Monoclonal Antibody  
Catalog #: AMRe02857**

---

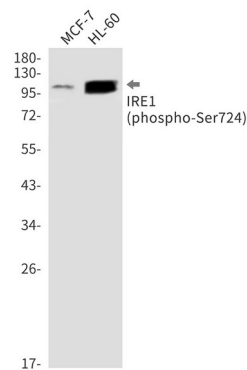
## Background

Senses unfolded proteins in the lumen of the endoplasmic reticulum via its N-terminal domain which leads to enzyme auto-activation. The active endoribonuclease domain splices XBP1 mRNA to generate a new C-terminus, converting it into a potent unfolded-protein response transcriptional activator and triggering growth arrest and apoptosis.

## Research Area

Signal Transduction

## Image Data



Western blot analysis of Phospho-IRE1 (Ser724) in MCF-7, HL-60 lysates using Phospho-IRE1 (Ser724) antibody.

## Note

For research use only.