

Product Name: Phospho-delta 1 Catenin (Thr916) Rabbit Monoclonal Antibody
Catalog #: AMRe02844

Summary

Production Name	Phospho-delta 1 Catenin (Thr916) Rabbit Monoclonal Antibody
Description	Recombinant Rabbit Monoclonal antibody
Host	Rabbit
Application	WB,IHC-F,IHC-P,ICC/IF
Reactivity	Human,Mouse

Performance

Conjugation	Unconjugated
Modification	Phosphorylated
Isotype	IgG
Clonality	Monoclonal Antibody
Form	Liquid
Storage	Store at 4°C short term. Aliquot and store at -20°C long term. Avoid freeze/thaw cycles.
Buffer	50mM Tris-Glycine(pH 7.4), 0.15M NaCl, 40% Glycerol, 0.01% Sodium azide and 0.05% BSA
Purification	Affinity Purified

Immunogen

Gene Name	CTNND1
Alternative Names	CAS; p120; BCDS2; CTNND; P120CAS; P120CTN; p120(CAS); p120(CTN)
Gene ID	1500
SwissProt ID	O60716

Application

Dilution Ratio	WB: 1/500-1/1000 IHC: 1/50-1/100 IF: 1/50-1/200
Molecular Weight	Calculated MW: 108 kDa; Observed MW: 100 kDa

Product Name: Phospho-delta 1 Catenin (Thr916) Rabbit Monoclonal Antibody
Catalog #: AMRe02844

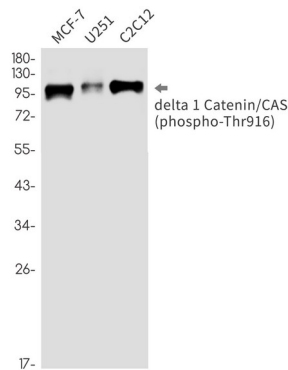
Background

Catenin δ -1 (p120 catenin) has an amino-terminal coiled-coil domain followed by a regulatory domain containing multiple phosphorylation sites and a central Armadillo repeat domain of ten linked 42-amino acid repeats. The carboxy-terminal tail has no known function. Catenin δ -1 fulfills critical roles in the regulation of cell-cell adhesion as it regulates E-cadherin turnover at the cell surface to determine the level of E-cadherin available for cell-cell adhesion.

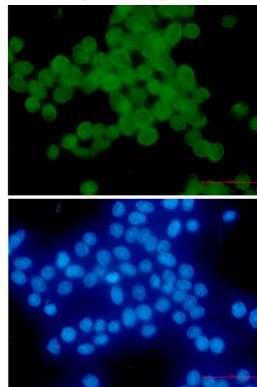
Research Area

Cell Biology

Image Data

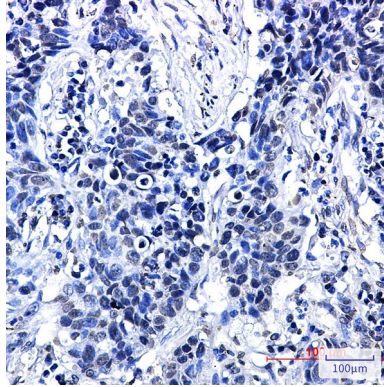


Western blot analysis of Phospho-delta 1 Catenin/CAS (Thr916) in MCF-7, U251, C2C12 lysates using Phospho-delta 1 Catenin (Thr916) antibody.



Immunocytochemistry analysis of delta 1 Catenin/CAS (Phospho-Thr916) (green) in HeLa using delta 1 Catenin/CAS (Phospho-Thr916) antibody, and DAPI (blue)

**Product Name: Phospho-delta 1 Catenin (Thr916) Rabbit
Monoclonal Antibody
Catalog #: AMRe02844**



Immunohistochemistry analysis of paraffin-embedded Human lung cancer using Phospho-delta 1 Catenin/CAS (Thr916) antibody. High-pressure and temperature Sodium Citrate pH 6.0 was used for antigen retrieval.

Note

For research use only.