

**Product Name: Phospho-CDC37 (Ser13) Rabbit
Monoclonal Antibody
Catalog #: AMRe02840**

Summary

Production Name	Phospho-CDC37 (Ser13) Rabbit Monoclonal Antibody
Description	Recombinant Rabbit Monoclonal antibody
Host	Rabbit
Application	WB,IP
Reactivity	Human,Mouse,Rat

Performance

Conjugation	Unconjugated
Modification	Phosphorylated
Isotype	IgG
Clonality	Monoclonal Antibody
Form	Liquid
Storage	Store at 4°C short term. Aliquot and store at -20°C long term. Avoid freeze/thaw cycles.
Buffer	50mM Tris-Glycine(pH 7.4), 0.15M NaCl, 40% Glycerol, 0.01% Sodium azide and 0.05% BSA
Purification	Affinity Purified

Immunogen

Gene Name	CDC37
Alternative Names	CDC37; CDC37A; Hsp90 co-chaperone Cdc37; Hsp90 chaperone protein kinase-targeting subunit; p50Cdc37
Gene ID	11140
SwissProt ID	Q16543

Application

Dilution Ratio	WB: 1/500-1/1000 IP: 1/20
Molecular Weight	Calculated MW: 44 kDa; Observed MW: 44 kDa

Product Name: Phospho-CDC37 (Ser13) Rabbit Monoclonal Antibody
Catalog #: AMRe02840

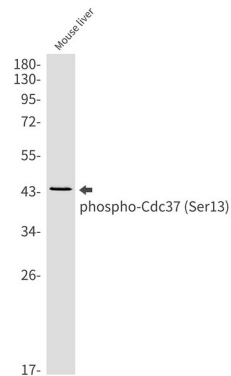
Background

CDC37 is an important component of the HSP90 chaperone complex. It was initially identified for its involvement in cell-cycle progression and was later found to have a much broader role as a chaperone for a wide variety of kinases and other proteins. CDC37 protein has an amino-terminal kinase binding domain followed by a central HSP90 binding domain.

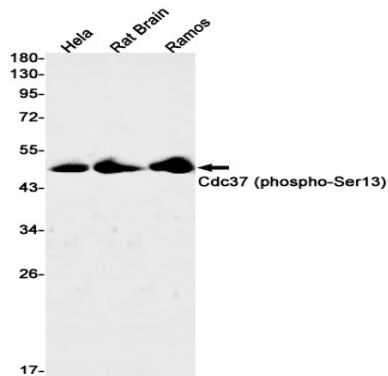
Research Area

Cell Biology

Image Data



Western blot analysis of Phospho-Cdc37 (Ser13) in mouse liver lysates using Phospho-CDC37 (Ser13) antibody.



Western blot analysis of Cdc37 (Phospho-Ser13) in HeLa, rat Brain, Ramos lysates using Cdc37 (Phospho-Ser13) antibody.

Note

For research use only.